



## Constituency Profiles:

### Birkenhead

*Including wards\*; Bidston and St James, Birkenhead and Tranmere, Cloughton, Oxton, Prenton, and Rock Ferry*

\*Based on 2004 ward boundaries

**Produced by Performance and Public Health  
Intelligence Team**

**October 2013**

## INTRODUCTION

Wirral Council is pleased to present the 2013 Constituency Profile for Birkenhead.

This document is intended to be a reference guide to the most recent information on the population, health and wellbeing status of the people living in the Birkenhead constituency of Wirral.

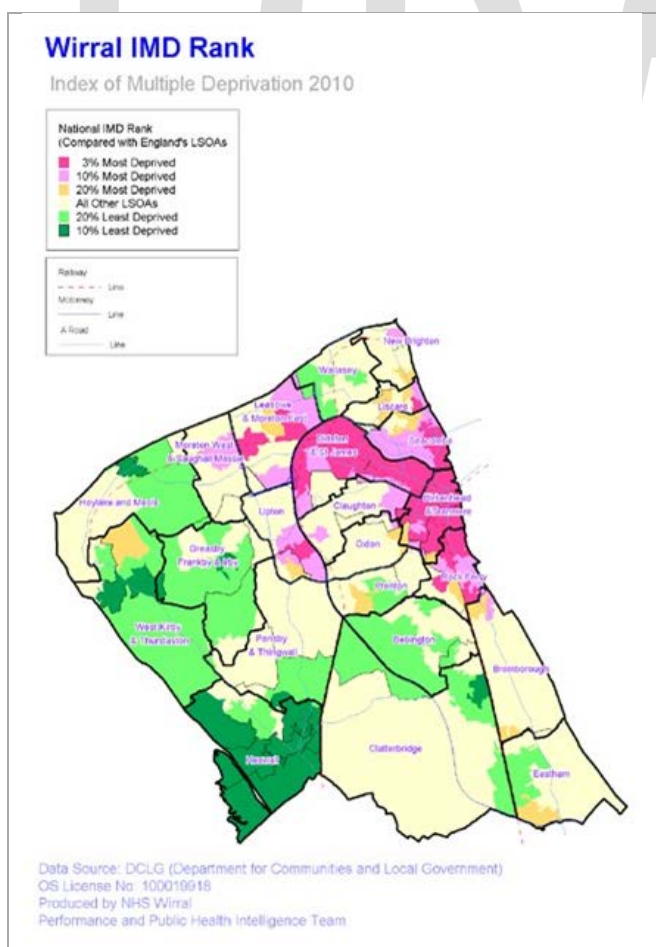
It has been designed to support key stakeholders and elected members for the constituency by enabling them to identify the key priorities for their local area.

This is the first edition of the Constituency profile and is designed to demonstrate a selection of the data available at a local level. In the future, the intention is to present this information to a wider audience in a variety of formats, including interactive maps, tables and charts that will all be available online.

The information is presented as a list of tables and charts, each presented with notes, definitions and data sources. The profile can be freely shared, but it is strongly recommended that the notes and definitions are included when using the information.

For more in-depth local health information on topics beyond the scope of this report, please check the [Wirral JSNA website](#). It is a comprehensive repository for a wide variety of information on the health and well-being of the Wirral population.

*Wirral Council Performance & Public Health Intelligence Team  
October 2013*



## Overview of Wirral

Wirral is a borough of contrast, both in its physical characteristics and demographics. Rural areas and urban and industrialised areas sit side by side in a compact peninsula of 60 square miles with around 30 miles of coastline.

- There is a lower proportion of younger adults in their twenties and thirties and a higher proportion of older people in Wirral compared to England and Wales
- The 65+ age group is expected to increase at a faster rate than any other age group over the next two decades. Between 2006 and 2031 it is estimated that this population group will have increased by 45% in Wirral
- [The Index of Multiple Deprivation \(IMD\) 2010](#), ranked Wirral as being in the most deprived 20% of local authorities nationally. The map (left) shows this differential in deprivation between the east and west of Wirral visually
- The inequality in disability-free life expectancy for example, is the largest in England and stood at 20 years for men and 17 years for women in 2012 ([Marmot Indicators, 2012](#))

Contents	Page
Executive Summary	3
List of Figures	4
List of Tables	5
Data and information	6
• Population data	6
• Children and young people	10
• Working age population	17
• Older people	30
• Mortality	33
Appendices and contact details	35

## Exec Summary

- Birkenhead has the largest number of people aged under 44 and the smallest number of people aged over 65 of all four Constituencies
- The two largest BME groups in the Constituency are Asian/Asian British and White Non-British. The Asian population is the largest of the four Constituencies
- Life expectancy in Birkenhead is the lowest of the four Constituencies
- Child poverty is highest in Birkenhead compared to the other three Constituencies and particularly acute in Bidston & St. James ward
- Educational attainment (at Key Stage 2) was lowest in Rock Ferry ward and highest in Prenton ward. Overall, Birkenhead performed the lowest of all four constituencies for reading, writing and grammar, spelling & punctuation. Maths attainment was better, particularly in Birkenhead & Tranmere ward, where performance outstripped Wirral West and South constituencies.
- The number of young people NEET ranges from one in five in Bidston & St. James to one in 20 in Oxton
- The rate of Looked After Children in Birkenhead is double that found in the other three Constituencies (highest ward Birkenhead & Tranmere)
- The rate of teenage conceptions in Birkenhead constituency is more than double the rate in West and South Wirral constituencies (highest ward Rock Ferry)
- The rate of mothers smoking in pregnancy is double the Wirral average
- Less than half of all new mothers initiate breastfeeding in Birkenhead (47%) compared to 74% in England
- Uptake of Measles, Mumps & Rubella (MMR) in Birkenhead is the lowest of the four Wirral constituencies and lower than the 95% required to prevent outbreaks
- Smoking quit rates are the lowest in Wirral, despite smoking rates being higher in areas of deprivation
- Birkenhead has the highest rate of claimants of JSA, ESA, Council Tax benefit and Housing Benefit of all four Constituencies. The most common reason for claiming ESA was mental health problems.
- Birkenhead has the highest rate of falls amongst older people (aged 65+) in Wirral and the highest percentage of older people who live alone
- Overall mortality from all causes is 30% higher than England in Birkenhead, whilst mortality from alcohol is 164% above the England average

## Figures

Figure 1: Estimated Resident Population by Age Group, Birkenhead Constituency, Mid-2011

Figure 2: Ethnicity by ward, Birkenhead Constituency, 2011

Figure 3: Life Expectancy at Birth, With 95% Limits Confidence Limits: Birkenhead Constituency, 2007-11 (5 years pooled)

Figure 4: Child Poverty: Birkenhead Constituency, 2010

Figure 5: Educational Attainment at Key Stages 2 and 4: Wirral, 2012

Figure 6: Young People Not in Education, Employment or Training (NEET): Birkenhead Constituency, January to December 2012

Figure 7: Looked After Children: Birkenhead Constituency, March 2012

Figure 8: Low Birthweight Babies: Birkenhead Constituency 2008-10 (3 years pooled)

Figure 9: Under 18 Conceptions by ward: Birkenhead Constituency, 2011

Figure 10: Births to Lone Mothers: Birkenhead Constituency, 2008-10 (3 years pooled)

Figure 11: Percentage Smoking in Pregnancy: Birkenhead Constituency, 2010/11 to 2011/12

Figure 12: Breast Feeding Initiation: Birkenhead Constituency, 2010/11 to 2011/12

Figure 13: Immunisation Uptake in 1 Year Old Children: Birkenhead Constituency, 2011/12

Figure 14: Immunisation Uptake in 2 Year Old Children: Birkenhead Constituency, 2011/12

Figure 15: Obesity in children aged 5 years, Birkenhead Constituency, 2012/13

Figure 16: Obesity in children aged 10 years, Birkenhead Constituency, 2012/13

Figure 17: Smoking Quit Rates (percentages): Birkenhead Constituency, 2008/09 to 2012/13

Figure 18: Road Collision Casualties: Birkenhead Constituency, 2010-12 (3 years pooled)

Figure 19: Monthly Job Seekers Allowance Claimants, Numbers and Rates by Gender: Birkenhead Constituency, March 2013

Figure 20: Proportion of Council Tax Claimants: Birkenhead Constituency, 2013

Figure 21: Proportion of Housing Benefit Claimants: Birkenhead Constituency, 2013

Figure 22: Employment & Support Allowance Claimants by specific health conditions, Number and Rates: Birkenhead Constituency, November 2012

Figure 23: Hospital Admission Rates for Falls in People aged 65 Years and over: Birkenhead Constituency, 2009/10 to 2011/12

Figure 24: People Living alone aged 65+, Birkenhead Constituency, 2011

Figure 25: Standardised Mortality Ratios for All Causes: Birkenhead Constituency, 2009-11 (3 years pooled)

Figure 26: Wholly Attributable Alcohol Related Mortality: Birkenhead Constituency, 2007-11 (3 years pooled)

## Tables

Table 1: Estimated Resident Population by Age Group, Birkenhead Constituency, Mid-2011

Table 2: Ethnicity by ward, Birkenhead Constituency, 2011

Table 3: Life Expectancy at Birth, With 95% Limits Confidence Limits: Birkenhead Constituency, 2007-11 (5 years pooled)

Table 4: Child Poverty: Birkenhead Constituency, 2010

Table 5: Educational Attainment at Key Stages 2 and 4: Wirral, 2012

Table 6: Young People Not in Education, Employment or Training (NEET): Birkenhead Constituency, January to December 2012

Table 7: Looked After Children: Birkenhead Constituency, March 2012

Table 8: Low Birthweight Babies: Birkenhead Constituency 2008-10 (3 years pooled)

Table 9: Under 18 Conceptions by ward: Birkenhead Constituency, 2011

Table 10: Births to Lone Mothers: Birkenhead Constituency, 2008-10 (3 years pooled)

Table 11: Percentage Smoking in Pregnancy: Birkenhead Constituency, 2010/11 to 2011/12

Table 12: Breast Feeding Initiation: Birkenhead Constituency, 2010/11 to 2011/12

Table 13: Immunisation Uptake in 1 Year Old Children: Birkenhead Constituency, 2011/12

Table 14: Immunisation Uptake in 2 Year Old Children: Birkenhead Constituency, 2011/12

Table 15: Obesity in children aged 5 years, Birkenhead Constituency, 2012/13

Table 16: Obesity in children aged 10 years, Birkenhead Constituency, 2012/13

Table 17: Smoking Quit Rates (percentages): Birkenhead Constituency, 2008/09 to 2012/13

Table 18: Road Collision Casualties: Birkenhead Constituency, 2010-12 (3 years pooled)

Table 19: Monthly Job Seekers Allowance Claimants, Numbers and Rates by Gender: Birkenhead Constituency, March 2013

Table 20: Proportion of Council Tax Claimants: Birkenhead Constituency, 2013

Table 21: Proportion of Housing Benefit Claimants: Birkenhead Constituency, 2013

Table 22: Employment & Support Allowance Claimants by specific health conditions, Number and Birkenhead Constituency, November 2012

Table 23: Hospital Admission Rates for Falls in People aged 65 Years and over: Birkenhead Constituency, 2009/10 to 2011/12

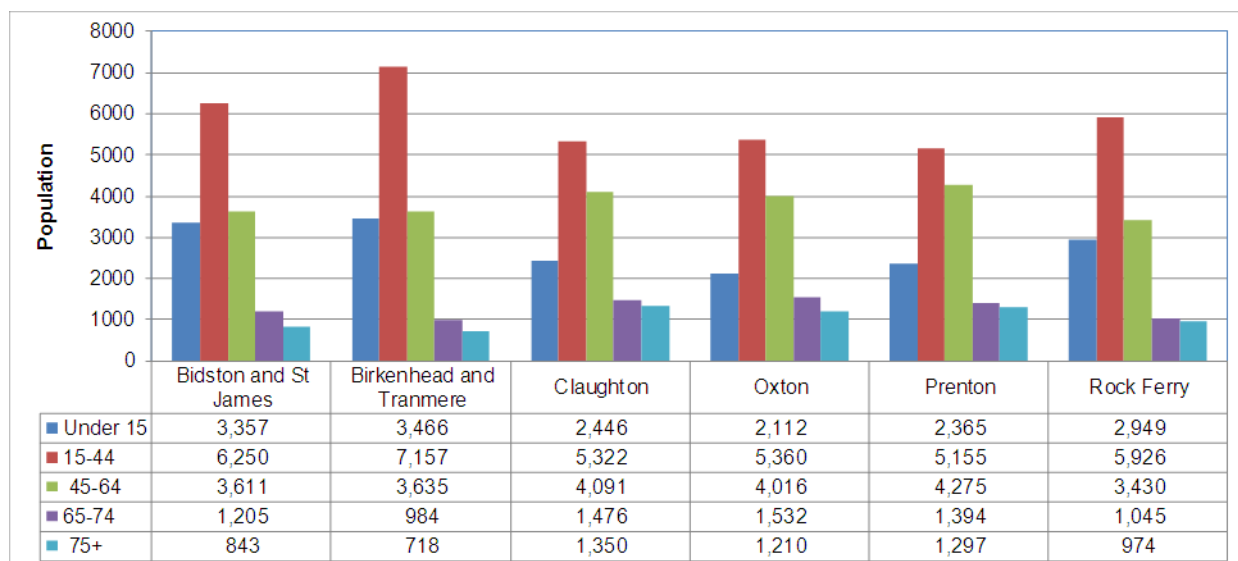
Table 24: People living alone aged 65+, Birkenhead Constituency, 2011

Table 25: Carers in Wirral, 2012

Table 26: Standardised Mortality Ratios for All Causes: Birkenhead Constituency, 2009-11 (3 years pooled)

Table 27: Wholly Attributable Alcohol Related Mortality: Birkenhead Constituency, 2007-11 (3 years pooled)

**Figure 1: Estimated Resident Population by Age Group, Birkenhead Constituency, Mid-2011**



As the chart and table show, in the Birkenhead constituency area, 15-44 year olds make up the largest proportion of the population. This is the case for every ward in the constituency. Claughton has the largest numbers of people aged over 75, whilst Birkenhead & Tranmere has the largest number of children aged under 15. Overall, Birkenhead has the largest number of people aged under 44 and the smallest number of people aged 65+ of all four Constituencies.

**Table 1: Estimated Resident Population by Age Group, Birkenhead Constituency, Mid-2011**

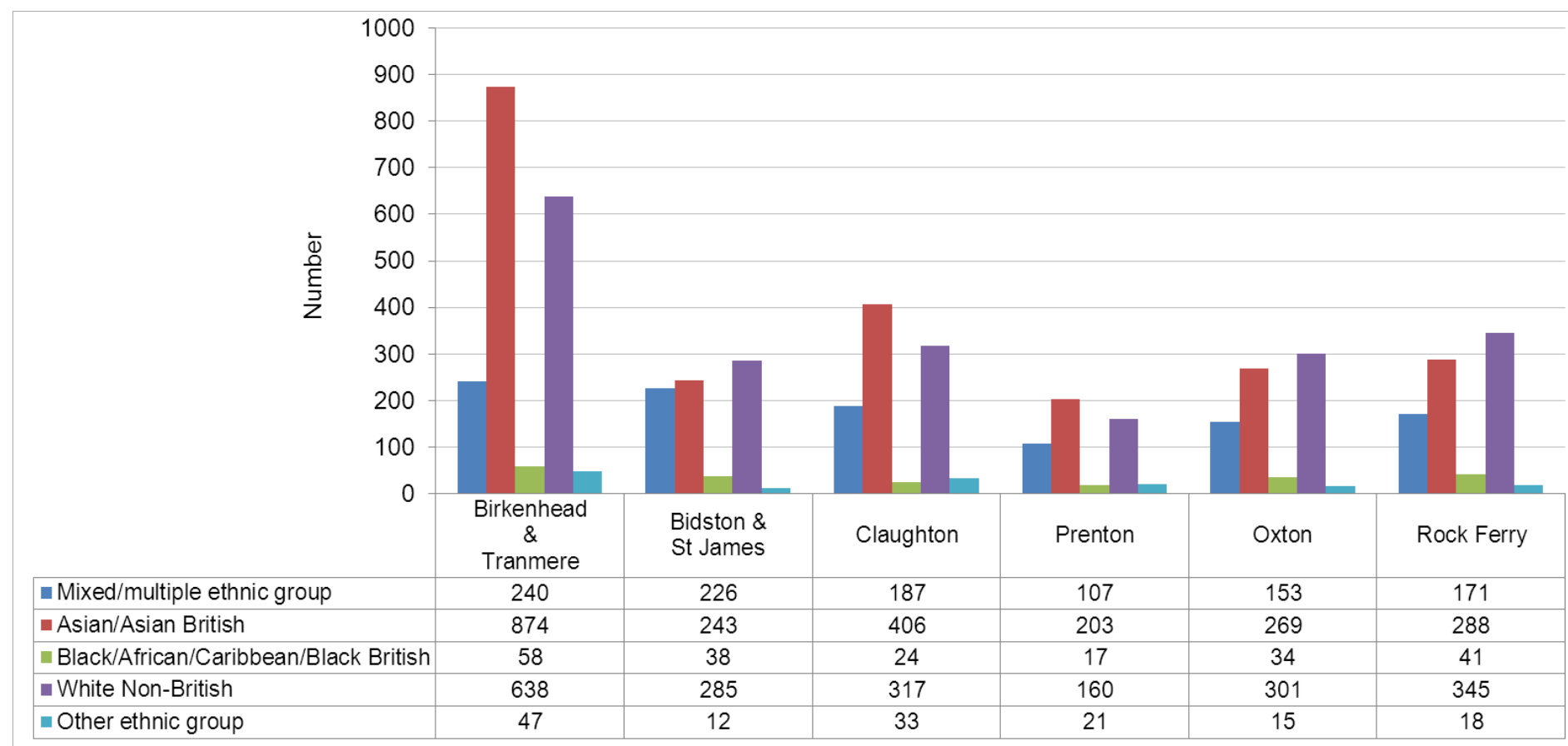
Ward of Residence (2004 boundaries)	Total Population	Under 15	15-44	45-64	65-74	75+
Bidston & St James	15,266	3,357	6,250	3,611	1,205	843
Birkenhead & Tranmere	15,960	3,466	7,157	3,635	984	718
Claughton	14,685	2,446	5,322	4,091	1,476	1,350
Oxton	14,230	2,112	5,360	4,016	1,532	1,210
Prenton	14,486	2,365	5,155	4,275	1,394	1,297
Rock Ferry	14,324	2,949	5,926	3,430	1,045	974
<b>Birkenhead Constituency</b>	<b>88,951</b>	<b>16,695</b>	<b>35,170</b>	<b>23,058</b>	<b>7,636</b>	<b>6,392</b>
<b>Wallasey Constituency</b>	<b>89,483</b>	<b>15,818</b>	<b>33,793</b>	<b>24,612</b>	<b>7,939</b>	<b>7,321</b>
<b>Wirral South Constituency</b>	<b>72,285</b>	<b>11,775</b>	<b>23,892</b>	<b>20,456</b>	<b>8,406</b>	<b>7,756</b>
<b>Wirral West Constituency</b>	<b>69,118</b>	<b>10,901</b>	<b>21,725</b>	<b>20,515</b>	<b>7,612</b>	<b>8,365</b>
<b>Wirral</b>	<b>319,837</b>	<b>55,189</b>	<b>114,580</b>	<b>88,641</b>	<b>31,593</b>	<b>29,834</b>

#### Notes and Definitions

1. The above table shows the estimated resident population at mid-year 2011 for the 2004 boundaries.
2. These estimates are derived from mid-2004 Lower Super Output Area (LSOA) population estimates by quinary age and sex. The estimates from LSOA populations were re-distributed using the 2001 census ward boundaries.
3. These estimated figures are not guaranteed to be accurate at this level of detail.

Source: Office for National Statistics © Crown Copyright

**Figure 2: Ethnicity by ward (broad ethnic groupings), Birkenhead constituency, 2011**



All ethnicities in Wirral including White British are shown in the table below, but the chart shows only ethnicities *other* than White British (small numbers of people from other ethnic groups would make the chart difficult to read if the scale was increased to show the White British population). The chart shows that the largest numbers of people from ethnic minority groups in the Birkenhead constituency area live in Birkenhead & Tranmere ward. The two largest (broad groupings) groups are Asian/Asian British and White Non-British. The largest ethnic minority group (detailed groupings) in Wirral is now Other White, a change from the 2001 Census when the largest ethnic group in Wirral was White Irish (now the second largest ethnic group in Wirral). Based on applications for New National Insurance numbers over the last several years, it seems likely that a large percentage of the White Non-British (or Other White) group are from the EU Accession states (Eastern European countries such as Poland, Hungary etc...see [Wirral JSNA BME section](#) for more details). The third largest ethnic group in Wirral in 2011 was Chinese. As the table below shows, the majority of these three ethnic groups live in Birkenhead constituency.

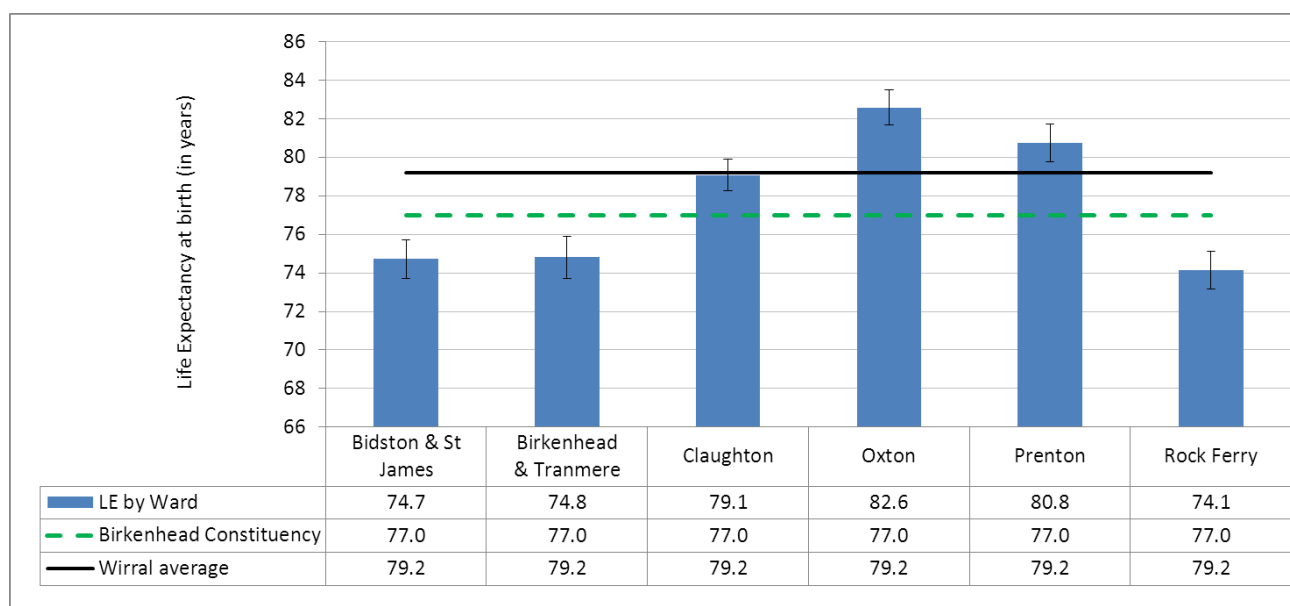
Table 2: Ethnicity by ward (broad and detailed groupings shown) Birkenhead constituency, 2011

Ethnic Group (broad and detailed groupings)		Birkenhead	Wallasey	Wirral South	Wirral West	Grand Total
Other	Arab	45	51	47	65	208
	Any other ethnic group	101	74	61	86	322
Mixed/multiple ethnic	Mixed/multiple ethnic group: Other Mixed	254	227	157	177	815
	Mixed/multiple ethnic group: White and Black African	234	184	80	60	558
	Mixed/multiple ethnic group: White and Asian	281	235	219	214	949
	Mixed/multiple ethnic group: White & Black Caribbean	315	353	130	166	964
Asian/Asian British	Asian/Asian British: Chinese	711	427	274	241	1653
	Asian/Asian British: Other Asian	309	292	185	256	1042
	Asian/Asian British: Bangladeshi	591	192	41	27	851
	Asian/Asian British: Indian	589	199	241	315	1344
	Asian/Asian British: Pakistani	83	21	52	70	226
Black/African/Caribbean/Black British	Black/African/Caribbean/Black British: African	126	123	90	50	389
	Black/African/Caribbean/Black British: Other Black	21	42	23	31	117
	Black/African/Caribbean/Black British: Caribbean	65	68	33	23	189
White non-British	White: Irish	820	737	561	549	2667
	White: Gypsy or Irish Traveller	35	13	15	14	77
	White: Other White	1191	1009	788	742	3730
White British	White: English/Welsh/Scottish/Northern Irish	84204	85197	70953	63328	303682
<b>Total</b>		<b>89975</b>	<b>89444</b>	<b>73950</b>	<b>66414</b>	<b>319783</b>

Source: NOMIS/Census, 2011



**Figure 3: Life Expectancy at Birth, With 95% Confidence Limits: Birkenhead Constituency, 2007-11 (5 years pooled)**



As the chart and table show, Rock Ferry has the lowest life expectancy in Birkenhead constituency (in fact, Rock Ferry has the lowest life expectancy of all the wards in Wirral). Only Oxtan and Prenton were above the Wirral average for life expectancy in Birkenhead constituency.

**Table 3: Life Expectancy at Birth, With 95% Limits Confidence Limits: Birkenhead Constituency, 2007-11 (5 years pooled)**

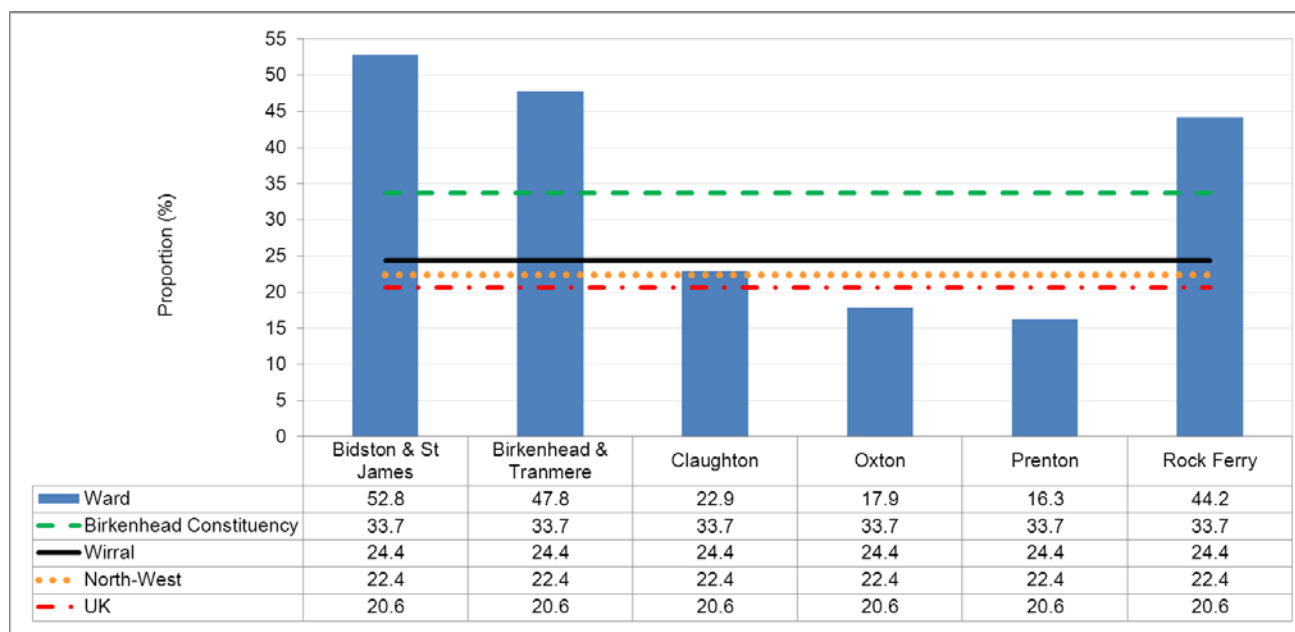
Ward of Residence (2004 Boundaries)	Life Expectancy (years)	95% Confidence Intervals	
		Lower Limit	Upper Limit
Bidston and St James	74.7	73.7	75.7
Birkenhead and Tranmere	74.8	73.7	75.9
Claughton	79.1	78.3	79.9
Oxtan	82.6	81.7	83.5
Prenton	80.8	79.8	81.7
Rock Ferry	74.1	73.2	75.1
<b>Birkenhead Constituency</b>	<b>77.0</b>	<b>76.6</b>	<b>77.4</b>
<b>Wallasey Constituency</b>	<b>78.4</b>	<b>78.0</b>	<b>78.8</b>
<b>Wirral South Constituency</b>	<b>80.5</b>	<b>80.1</b>	<b>80.9</b>
<b>Wirral West Constituency</b>	<b>81.2</b>	<b>80.8</b>	<b>81.6</b>
<b>Wirral</b>	<b>79.2</b>	<b>79.0</b>	<b>79.4</b>

#### Notes and Definitions

1. The mortality data used in the calculations were deaths registered in each year from 2007-2011. Five years of data were aggregated to provide a reasonable number of deaths for each ward. The ward populations used in the calculations are ONS ward populations. These ward populations are classed as "experimental statistics".
2. Life expectancy at birth indicates the number of years a baby born in an area can expect to live if they experience the mortality rates of that area for the whole of their life. It is not a guide to the remaining expectation of life at a later age, e.g. if life expectancy at birth in a particular ward is 80 years, it does not follow that people aged 70 living in that ward can expect to live for a further 10 years.
3. Ward life expectancies are calculated locally, hence they are not comparable with life expectancy figures for England overall (due to slightly different methodologies)

Source: Office for National Statistics © Crown Copyright

**Figure 4: Child Poverty: Birkenhead Constituency, 2010**



As the chart and table show, three wards in Birkenhead constituency had levels of child poverty which are above the national, regional and local averages in 2010 (the last year rates at small area/ward level were calculated). These same three wards had the highest levels of child poverty in Wirral and in the case of Bidston & St. James, this means that more than half of children were living in poverty (53%). Only Oxton and Prenton were below national, regional and local averages.

**Table 4: Child Poverty: Birkenhead Constituency, 2010**

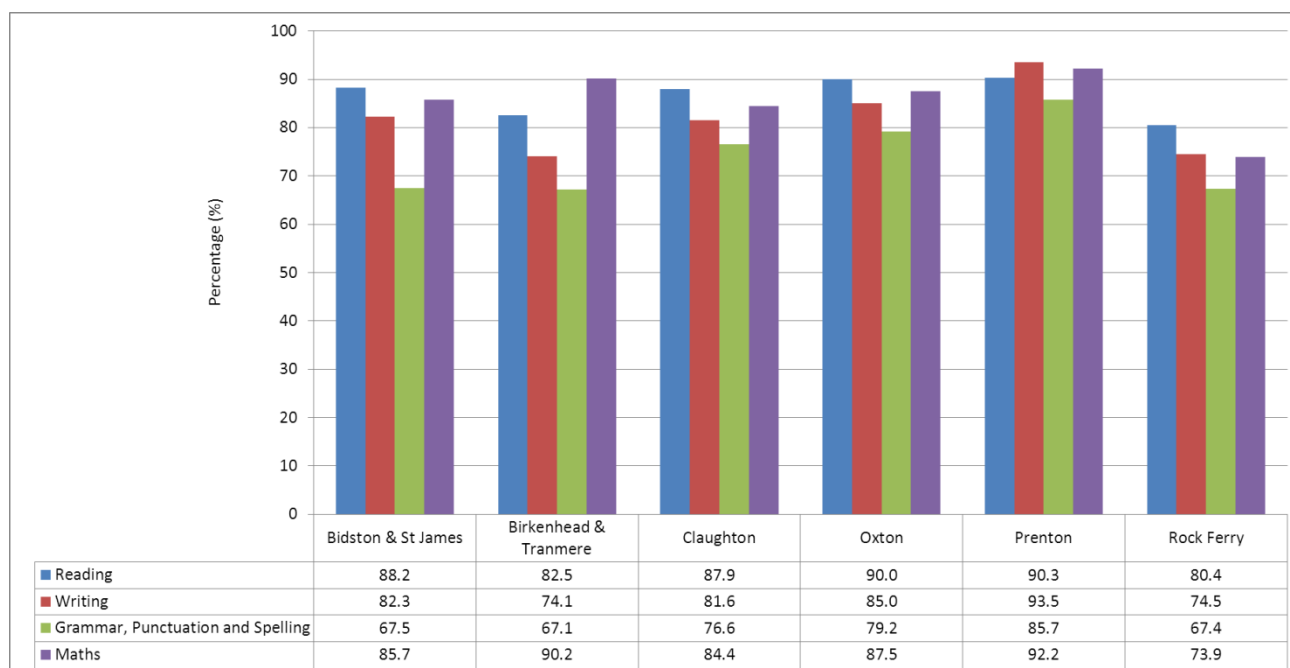
Ward of Residence (2004 boundaries)	% of all children living in poverty
Bidston and St James	52.8
Birkenhead and Tranmere	47.8
Claughton	22.9
Oxton	17.9
Prenton	16.3
Rock Ferry	44.2
<b>Birkenhead Constituency</b>	<b>33.7</b>
<b>Wallasey Constituency</b>	<b>26.4</b>
<b>Wirral South Constituency</b>	<b>12.4</b>
<b>West Wirral Constituency</b>	<b>12.6</b>
<b>Wirral</b>	<b>24.4</b>
<b>North West</b>	<b>22.4</b>
<b>UK</b>	<b>20.6</b>

#### Notes and Definitions

1. Child poverty is calculated on the basis of the number of children in families in receipt of either out of work benefits, or tax credits where their reported income is less than 60% median income as a proportion of the total number of children in the area.

Source: Her Majesty's Revenue and Customs (HMRC), 2013

**Figure 5: Educational Attainment at Key Stages 2 (Level 4): Wirral, 2012**



As Figure 5 above shows, the highest overall levels of attainment in 2012 were for children from Prenton ward, the poorest overall was for children from Rock Ferry ward. There were some interesting variations within the constituency however, for example, In Birkenhead & Tranmere (where outcomes are often poor for many indicators), attainment in Maths was the second highest in the Constituency and outperformed Wirral West and Wirral South constituencies overall. It did however, have the poorest attainment in the constituency for Grammar, Punctuation & Spelling. Compared to the other constituencies Birkenhead had the lowest attainment for Writing, and the 2<sup>nd</sup> lowest achievement for the other three indicators.

**Table 5: Educational Attainment at Key Stages 2 (Level 4): Wirral, 2012**

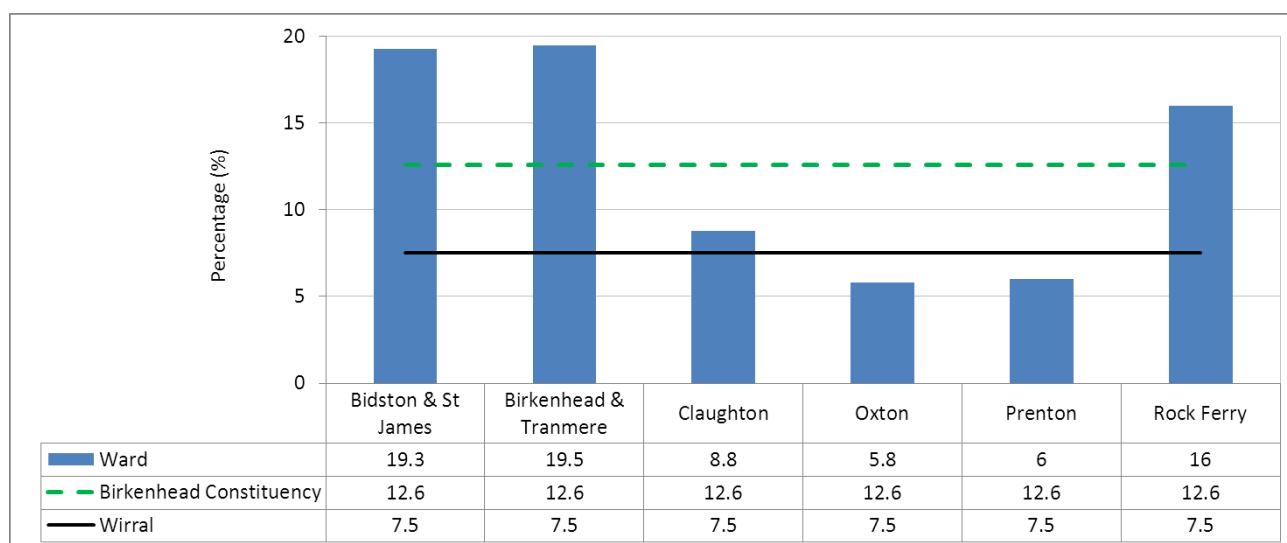
Ward of Residence (2004 boundaries)	Key Stage 2 - % achieving Level 4+			
	Reading	Writing	Grammar, Punctuation & Spelling	Maths
Bidston and St James	88.2	82.3	67.5	85.7
Birkenhead and Tranmere	82.5	74.1	67.1	90.2
Claughton	87.9	81.6	76.6	84.4
Oxton	90.0	85.0	79.2	87.5
Prenton	90.3	93.5	85.7	92.2
Rock Ferry	80.4	74.5	67.4	73.9
<b>Birkenhead Constituency</b>	<b>86.6</b>	<b>81.8</b>	<b>73.9</b>	<b>85.7</b>
<b>Wallasey Constituency</b>	<b>84.7</b>	<b>83.1</b>	<b>71.1</b>	<b>81.2</b>
<b>West Wirral Constituency</b>	<b>91.2</b>	<b>88.6</b>	<b>78.9</b>	<b>89.7</b>
<b>Wirral South Constituency</b>	<b>89.3</b>	<b>88.4</b>	<b>79.2</b>	<b>88.0</b>
<b>Wirral</b>	<b>87.3</b>	<b>84.7</b>	<b>74.6</b>	<b>85.2</b>

#### Notes and Definitions

1. All data refer to children living in Wirral who are educated in schools run by Wirral Local Education Authority (LEA).
2. The table shows the percentage of pupils achieving Level 4 or above in the Key Stage 2 tests for English and Maths. Level 4 is the level expected of most 11 year olds.

Source: Wirral Council Information and Performance Department, 2013

**Figure 6: Young People Not in Education, Employment or Training (NEET): Birkenhead Constituency, January to December 2012**



As the chart and table show, almost one in five young people in Bidston & St. James and Birkenhead & Tranmere were NEET in 2012. The figure in Oxton was around one in 20. Only Oxton & Prenton wards were below the overall Wirral average for the percentage of young people NEET. In comparison to the other constituencies, Birkenhead had more than double the rate of young people NEET than Wirral South and almost three times the rate of West Wirral. Overall, Wirral is slightly below England and the North-West for young people NEET.

**Table 6: Young People Not in Education, Employment or Training (NEET): Birkenhead Constituency, January to December 2012**

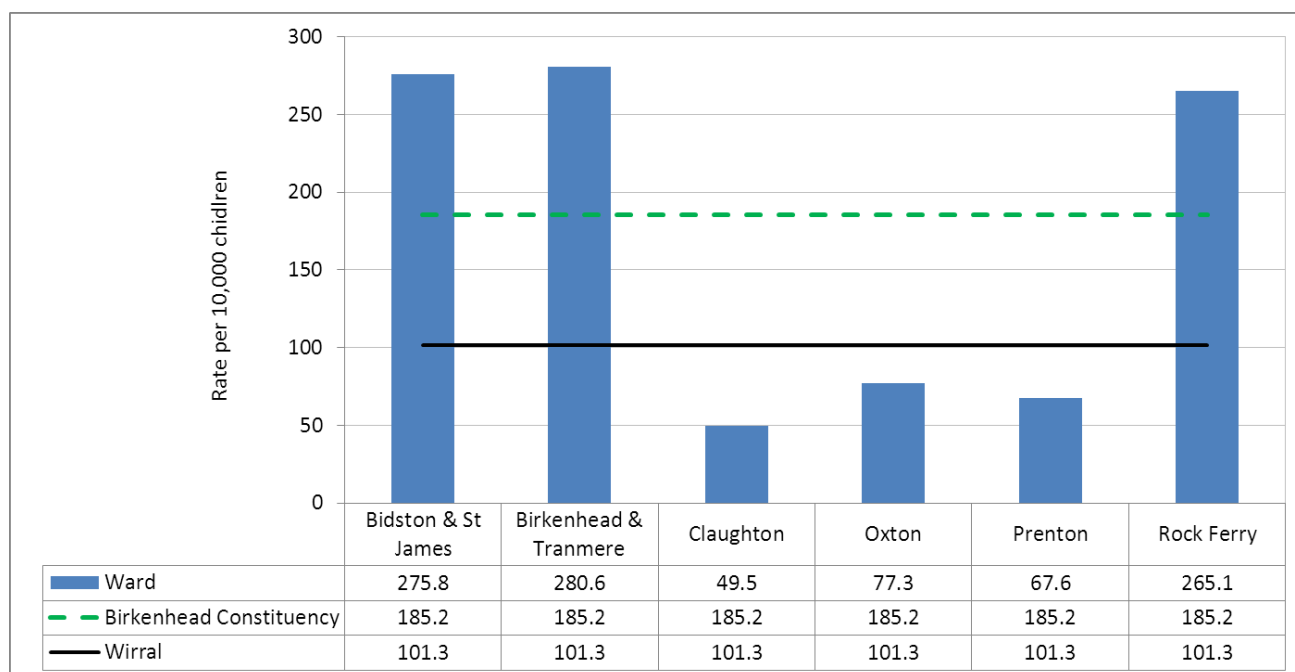
Ward of Residence (2004 boundaries)	% NEET
Bidston and St James	19.3
Birkenhead and Tranmere	19.5
Claughton	8.8
Oxton	5.8
Prenton	6.0
Rock Ferry	16.0
<b>Birkenhead Constituency</b>	<b>12.6</b>
<b>Wallasey Constituency</b>	<b>9.9</b>
<b>Wirral South Constituency</b>	<b>5.1</b>
<b>Wirral West Constituency</b>	<b>4.5</b>
<b>Wirral</b>	<b>7.5</b>
<b>North West</b>	<b>9.5</b>
<b>England</b>	<b>7.6</b>

#### Notes and Definitions

1. Percentage of young people 16-18 year olds who are not in education, employment or training in Wirral, 1 January 2012 to 31 December 2012.
2. Figures for the North West and England are for July 2012.

Source: Connexions MI & NCCIS Data, 2012

**Figure 7: Looked After Children (LAC): Birkenhead Constituency, March 2012**



As Figure 7 shows, the rate of LAC in Birkenhead constituency is more than double those found in the other three constituencies (and more than three times higher than England). Looking at particular wards, the variation is even more stark, with rates in Bidston & St. James and Birkenhead & Tranmere of 275.8 and 280.6 per 10,000 children. This is almost five times the overall England rate. In actual numbers, there are more looked after children in the Birkenhead constituency area than in all of the other three Wirral constituencies combined.

**Table 7: Looked After Children: Birkenhead Constituency, March 2012**

Ward of Residence (2004 boundaries)	Number	Rate Per 10,000
Bidston and St James	110	275.8
Birkenhead and Tranmere	115	280.6
Claughton	15	49.5
Oxton	20	77.3
Prenton	20	67.6
Rock Ferry	95	265.1
<b>Birkenhead Constituency</b>	<b>375</b>	<b>185.2</b>
<b>Wallasey Constituency</b>	<b>150</b>	<b>90.6</b>
<b>Wirral South Constituency</b>	<b>35</b>	<b>53.8</b>
<b>West Wirral</b>	<b>50</b>	<b>85.5</b>
<b>Wirral</b>	<b>675</b>	<b>101.3</b>
<b>North West</b>	<b>11,360</b>	<b>76.0</b>
<b>England</b>	<b>67,050</b>	<b>59.0</b>

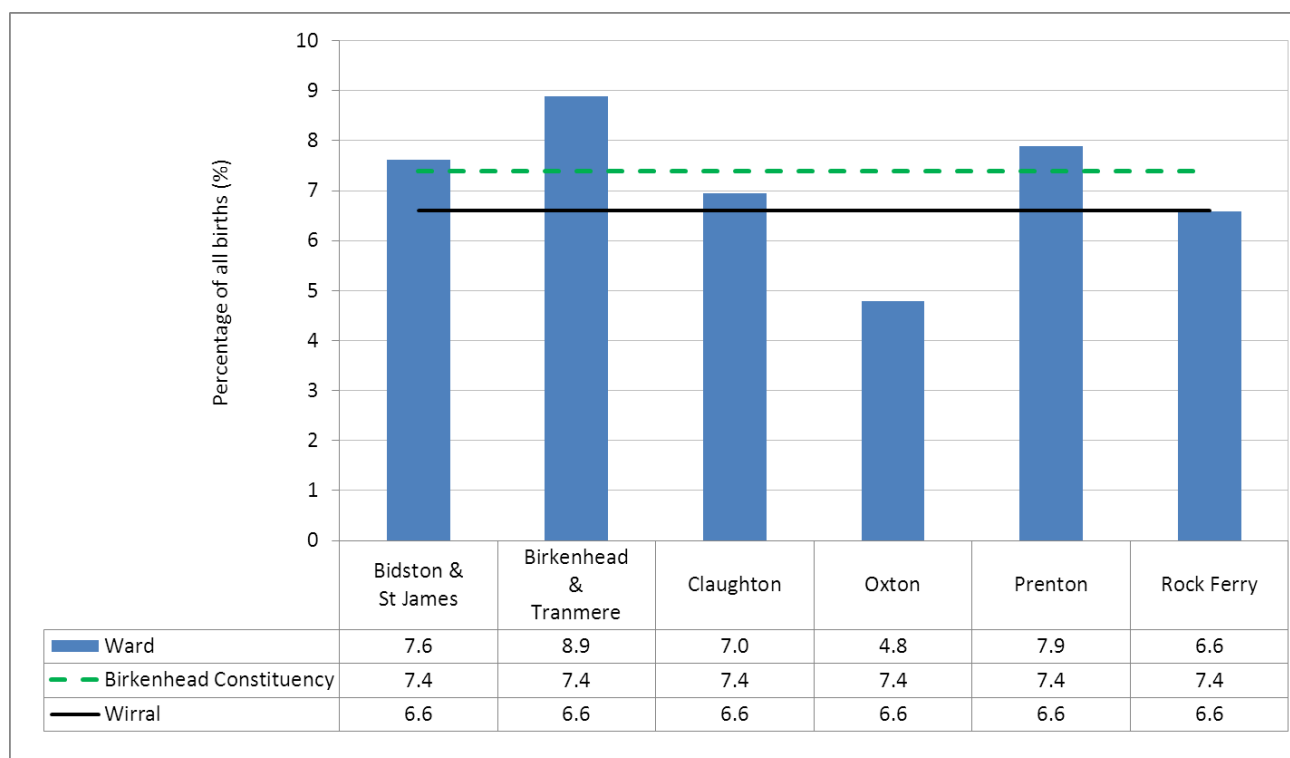
\* Numbers are rounded to the nearest 5

#### Notes and Definitions

1. Looked after children are: children who are in the care of the Local Authority and are between the ages of 0 to 17 years old.
2. The rates have been calculated using Wirral ONS 2011 mid-year populations for children aged 0 to 17 years. The rates are per 10,000 population.

Source: Wirral Council Social Services (Swift) Database/DCSF Annual Statistical Return SSDA903

**Figure 8: Low birth-weight babies: Birkenhead Constituency 2008-10 (3 years pooled)**



As Figure 8 shows, only Oxton ward in Birkenhead constituency had a lower percentage of low birth-weight babies than the Wirral average of 6.6% (Rock Ferry had the same rate as Wirral overall). Birkenhead & Tranmere had the highest percentage in the constituency at 8.9%. Overall, Birkenhead constituency had the highest rates of low birth weight of the four constituencies.

**Table 8: Low Birthweight Babies: Birkenhead Constituency 2008-10 (3 years pooled)**

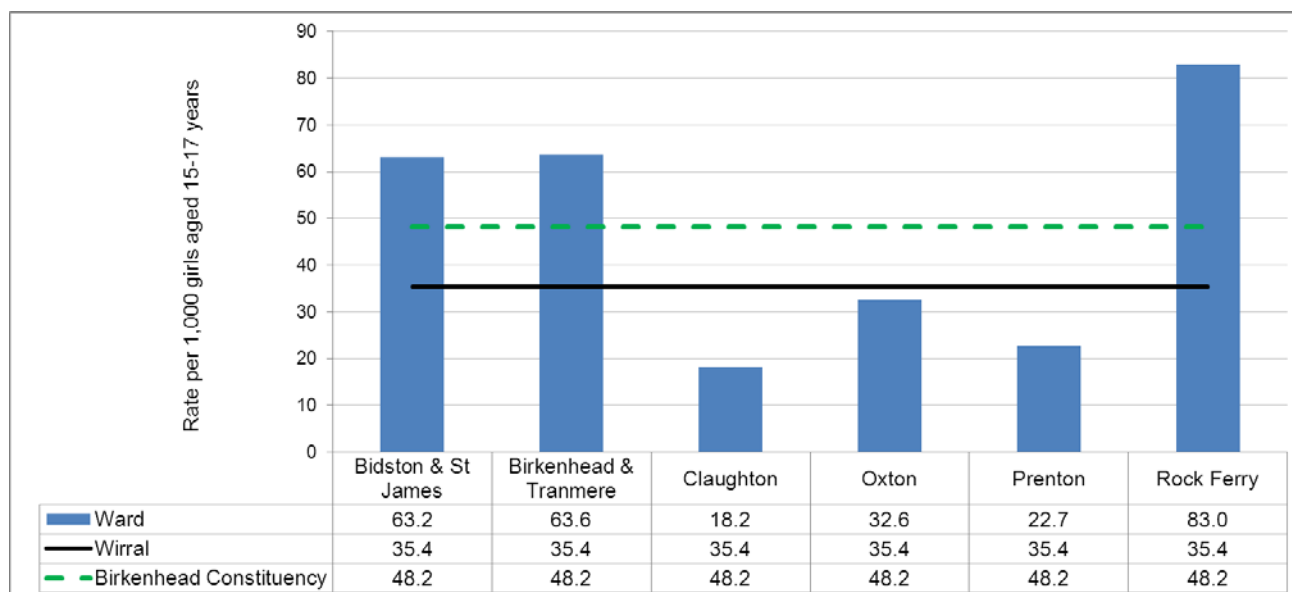
Ward of Residence (2004 Ward boundaries)	Total Number of Live and Stillbirths	Low Birth Weight	
		Total Number of Births <2,500g	% Of All Births
Bidston and St James	801	61	7.6
Birkenhead and Tranmere	967	86	8.9
Claughton	489	34	7.0
Oxton	438	21	4.8
Prenton	456	36	7.9
Rock Ferry	714	47	6.6
<b>Birkenhead Constituency</b>	<b>3865</b>	<b>285</b>	<b>7.4</b>
<b>Wallasey Constituency</b>	<b>3459</b>	<b>242</b>	<b>7.0</b>
<b>Wirral South Constituency</b>	<b>2106</b>	<b>104</b>	<b>4.9</b>
<b>West Wirral</b>	<b>1822</b>	<b>117</b>	<b>6.4</b>
<b>Wirral</b>	<b>11252</b>	<b>748</b>	<b>6.6</b>

#### Notes and Definitions

1. Low birth-weight babies - Percentage of live and stillborn infants with a stated birth-weight under 2,500 grams. The numbers exclude births without a recorded weight.
2. All figures are presented as a total for 3 years combined (2008-2010). This is to smooth out random year-on-year variations.

Source: Office for National Statistics © Crown Copyright

**Figure 9: Under 18 Conceptions by ward: Birkenhead Constituency, 2011**



As the chart and table show, the conception rate amongst girls aged under 18 (15-17 year olds) in Birkenhead constituency is more than double that in West and South Wirral constituencies. Rock Ferry is the ward with highest rate of conceptions in the Birkenhead Constituency area and it is also the ward with the highest rate in Wirral overall. Seacombe (in Wallasey constituency) has the next highest rate, followed by Birkenhead & Tranmere and Bidston & St James (both this constituency). Claughton and Prenton wards had the lowest rates in the constituency area. It's important to note this data is for all conceptions, regardless of outcome (both full term births and terminations). In actual numbers, these rates equate to 4 teenage girls becoming pregnant each week in Wirral (and of these, 1.5 of these will occur in Birkenhead Constituency).

**Table 9: Under 18 Conceptions by ward: Birkenhead Constituency, 2011**

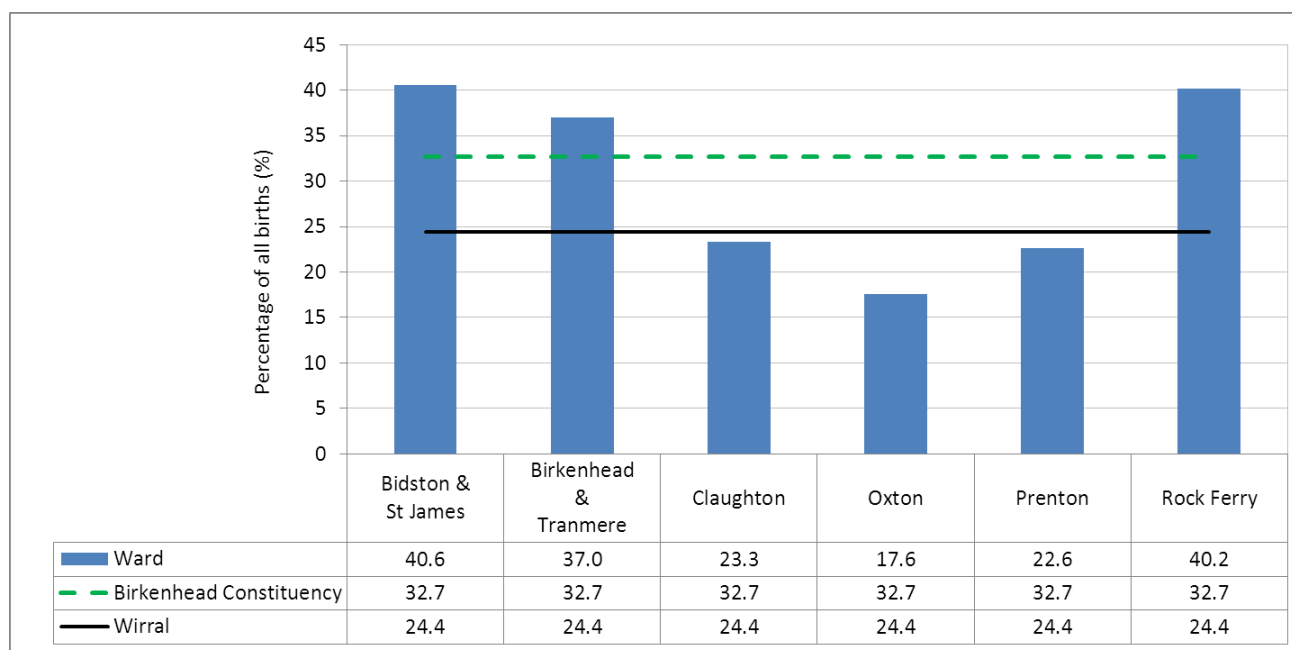
Ward of Residence (2004 boundaries)	Rate per 1000 girls
Bidston and St James	63.2
Birkenhead and Tranmere	63.6
Claughton	18.2
Oxton	32.6
Prenton	22.7
Rock Ferry	83.0
<b>Birkenhead Constituency</b>	<b>48.2</b>
<b>Wallasey Constituency</b>	<b>43.0</b>
<b>Wirral South Constituency</b>	<b>23.9</b>
<b>West Wirral Constituency</b>	<b>17.8</b>
<b>Wirral</b>	<b>35.4</b>

#### Notes and Definitions

1. Data is derived from local datasets based on activity rather than actual births. This is a proxy measure and is used to inform the local Teenage Pregnancy Steering Group Strategy, and should be used and interpreted with caution.
2. The rates have been calculated using Secondary User Service Data and BPAS data for the calendar period of 2011. The Populations used are mid-year populations for girls aged 15-17 years only.

Source: Secondary User Service, British Pregnancy Advisory Service (BPAS) and Office for National Statistics (ONS)

**Figure 10:** Births to lone mothers: Birkenhead Constituency, 2008-10 (3 years pooled)



As Figure 10 and Table 10 show, the percentage of births to lone mothers in Birkenhead constituency was higher than the Wirral average (33% compared to 24%) and the highest of the four constituencies during 2008-10. As you may expect, there was also considerable variation between wards in the constituency, with rates varying from 41% in Bidston & St. James ward, to 18% in Oxton ward.

**Table 10:** Births to lone mothers: Birkenhead Constituency, 2008-10 (3 years pooled)

Ward of Residence (2004 boundaries)	Total Number of Live and Stillbirths	Lone Mothers	
		Total Births to Lone Mothers	% Of All Births
Bidston and St James	801	325	40.6
Birkenhead and Tranmere	967	358	37.0
Claughton	489	114	23.3
Oxton	438	77	17.6
Prenton	456	103	22.6
Rock Ferry	714	287	40.2
<b>Birkenhead Constituency</b>	<b>3865</b>	<b>1264</b>	<b>32.7</b>
<b>Wallasey Constituency</b>	<b>3459</b>	<b>896</b>	<b>25.9</b>
<b>Wirral South Constituency</b>	<b>2106</b>	<b>300</b>	<b>14.2</b>
<b>West Wirral Constituency</b>	<b>1822</b>	<b>283</b>	<b>15.5</b>
<b>Wirral</b>	<b>11252</b>	<b>2743</b>	<b>24.4</b>

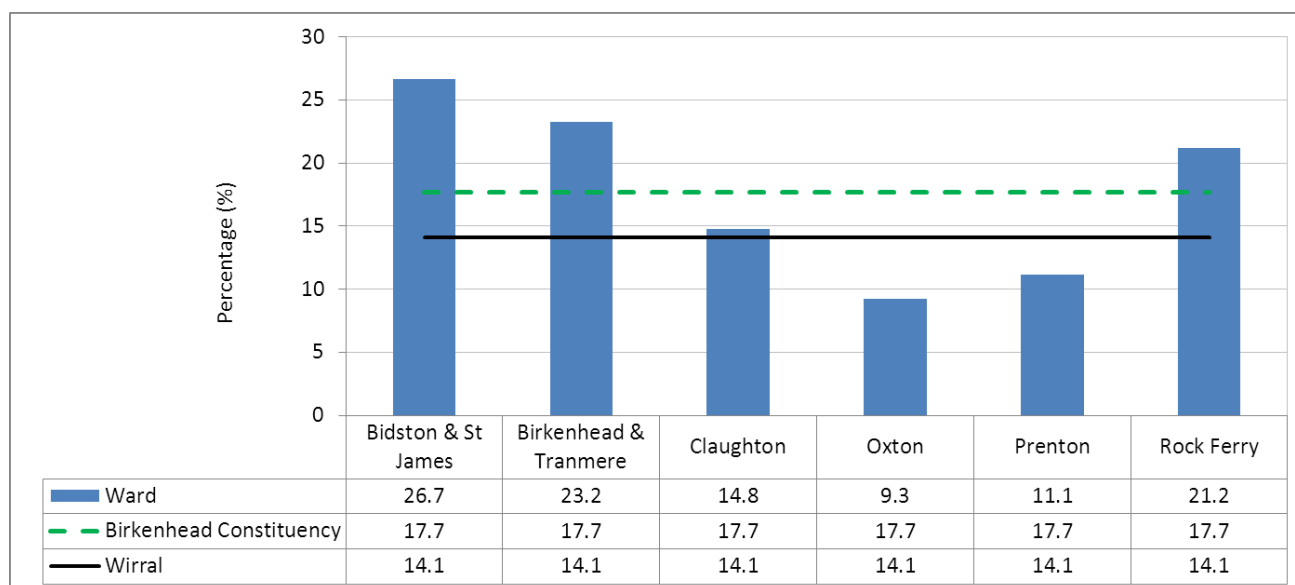
#### Notes and Definitions

1. Births to lone mothers: Percentage of all births registered solely by the mother or jointly by parents who are living at different addresses. Babies born to parents who are living at the same address but are not married have been excluded. Also excluded are babies born to married mothers who have separated from their spouses.
2. The figures in the above table are for live and stillbirths.
3. All figures are presented as a total for 3-years combined (2008-2010). This is to smooth out random year-on-year variations.

Source: Office for National Statistics © Crown Copyright



**Figure 11:** Percentage smoking in pregnancy: Birkenhead Constituency, 2010/11 to 2011/12



As Figure 11 and Table 11 show, in Wirral overall, almost one in seven women (14%) are still smoking at delivery, compared to almost 18% in Birkenhead constituency. This overall figure masks significant variation between the constituency wards however, as rates vary from less than one in ten women in Oxton (9%) to more than one in four in Bidston & St. James (27%). Only Oxton and Prenton had rates below the Wirral average, all other wards were above the Wirral average. Smoking in pregnancy was four times higher in some wards of Birkenhead constituency, compared to Wirral West and Wirral South overall (both 6.4%).

**Table 11:** Percentage smoking in pregnancy: Birkenhead Constituency, 2010/11 to 2011/12

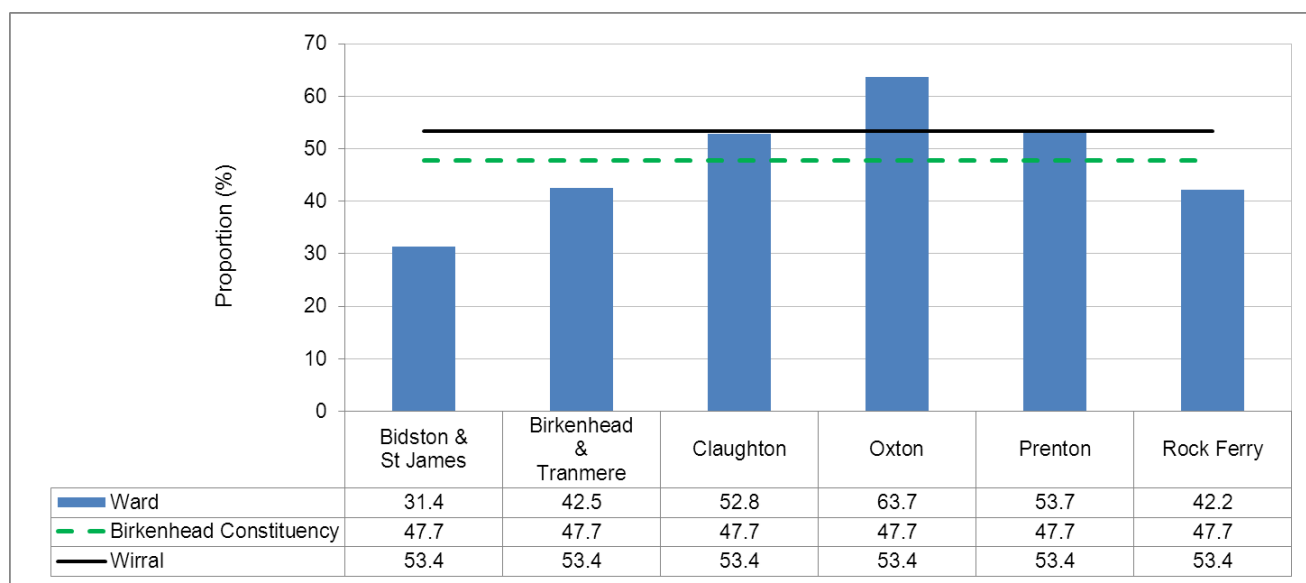
Ward of Residence (2004 boundaries)	Smoking in Pregnancy 2010/11 - 2011/12
Bidston and St James	26.7
Birkenhead and Tranmere	23.2
Claughton	14.8
Oxton	9.3
Prenton	11.1
Rock Ferry	21.2
<b>Birkenhead Constituency</b>	<b>17.7</b>
<b>Wallasey Constituency</b>	<b>14.6</b>
<b>Wirral South Constituency</b>	<b>6.4</b>
<b>West Wirral Constituency</b>	<b>6.4</b>
<b>Wirral</b>	<b>14.1</b>

#### Notes and Definitions

1. The figures in this table have been extracted from the WHIS database. The data is for 2 financial years pooled from 2010/11 to 2011/12.
2. Percentage rates for smoking in pregnancy are for women who gave birth at Wirral Hospital Trust, excluding pregnancies in women residing outside of NHS Wirral. Also excluded are pregnancies where there was no response to the smoking in pregnancy question. Overall this data covers around 91% of Wirral births.
3. Smoking in pregnancy is the percentage (%) of women known to be smokers at the time of delivery.

Source: Wirral Health Informatics Service (WHIS), 2012

**Figure 12: Breastfeeding Initiation: Birkenhead Constituency, 2010/11 to 2011/12**



As Figure and Table 12 show, breastfeeding initiation rates were considerably lower in Birkenhead constituency compared to Wirral overall in 2010/11 to 2011/12 (48% compared to 53%). Even within Birkenhead constituency, there was significant variation between wards, with almost 2 in 3 women initiating breastfeeding in Oxton ward (64%), compared to less than one in three in Bidston & St. James ward (31%). [National breastfeeding initiation rates were 74% in 2011/12](#), so even Wirral West falls short of the average for England (this data is not included in the table as it is for one year only – the table shows 2 pooled years).

**Table 12: Breastfeeding Initiation: Birkenhead Constituency, 2010/11 to 2011/12**

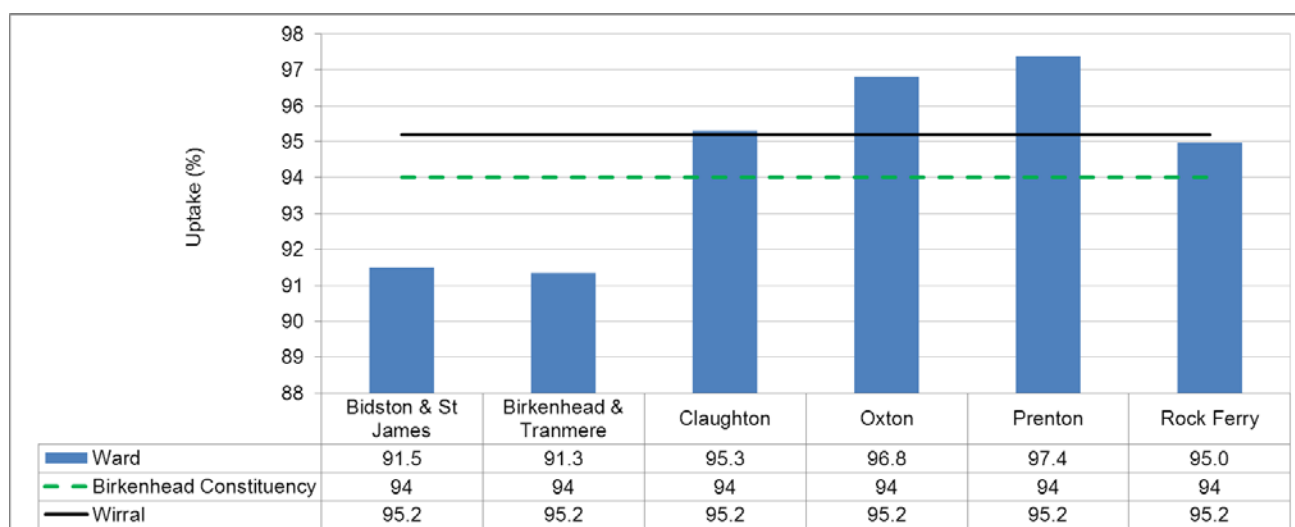
Ward of Residence (2004 boundaries)	Breastfeeding Initiation 2010/11 - 2011/12
Bidston and St James	31.4
Birkenhead and Tranmere	42.5
Claughton	52.8
Oxton	63.7
Prenton	53.7
Rock Ferry	42.2
<b>Birkenhead Constituency</b>	<b>47.7</b>
<b>Wallasey Constituency</b>	<b>52.3</b>
<b>Wirral South Constituency</b>	<b>64.1</b>
<b>West Wirral Constituency</b>	<b>69.5</b>
<b>Wirral</b>	<b>53.4</b>

#### Notes and Definitions

1. The figures in this table have been extracted from the WHIS database. The data is for 2 financial years pooled from 2010/11 to 2011/12.
2. Percentage rates for breast feeding initiation are for women who gave birth at Wirral Hospital Trust, excluding pregnancies in women residing outside of NHS Wirral. Also excluded are pregnancies where there was no response to breastfeeding initiation question. Overall this data covers around 91% of Wirral births.
3. Breastfeeding initiation is defined as a mother giving any breast milk (including expressed breast milk) in the first 48 hours.

Source: Wirral Health Informatics Service (WHIS), 2012

**Figure 13:** Immunisation Uptake of Primary Immunisations aged 1 Years Old: Birkenhead Constituency, 2011/12



As the chart and table show, the percentage uptake of the primary immunisations in Birkenhead constituency fell below the 95% level required to prevent epidemics (known as 'herd immunity') in 2011/12. The 95% target has been achieved in Wirral overall and Birkenhead was the only constituency of the four which did not achieve 95% uptake. The two wards of particular concern were Bidston & St. James and Birkenhead & Tranmere (both at around 91%).

**Table 13:** Immunisation Uptake of Primary Immunisations aged 1 Years Old: Birkenhead Constituency, 2011/12

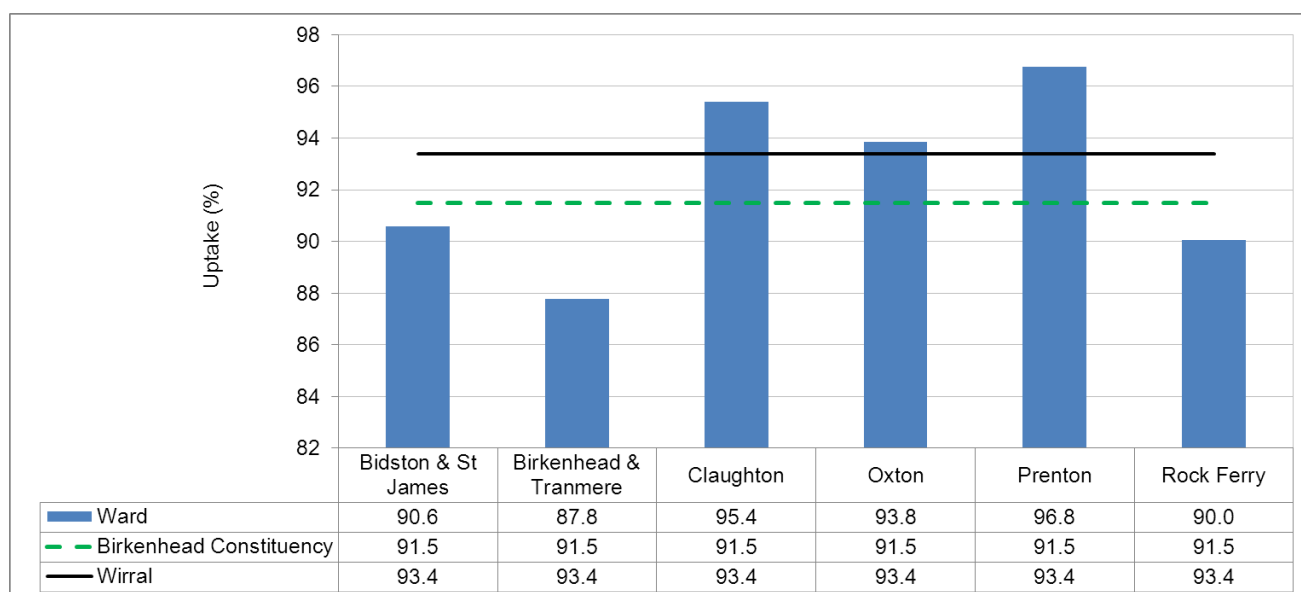
Ward of Residence (2004 boundaries)	Uptake of 3rd Primary Immunisation		
	Number of Children Aged 1	Number Vaccinated	Uptake Rate (%)
Bidston & St James	235	215	91.5
Birkenhead & Tranmere	323	295	91.3
Claughton	170	162	95.3
Oxton	157	152	96.8
Prenton	153	149	97.4
Rock Ferry	258	245	95.0
<b>Birkenhead Constituency</b>	<b>1,296</b>	<b>1,218</b>	<b>94.0</b>
<b>Wallasey Constituency</b>	<b>1,084</b>	<b>1,041</b>	<b>96.0</b>
<b>Wirral South Constituency</b>	<b>730</b>	<b>698</b>	<b>95.6</b>
<b>West Wirral Constituency</b>	<b>651</b>	<b>623</b>	<b>95.7</b>
<b>Wirral</b>	<b>3,776</b>	<b>3,594</b>	<b>95.2</b>

#### Notes and Definitions

1. Uptake of 3<sup>rd</sup> primary immunisations is defined as a child having received their 3<sup>rd</sup> Diphtheria immunisation.
2. Number of children aged 1: The total number of 1 year old children within each ward for the period 2011/12.  
Number vaccinated: The number of 1 year old children who have received their 3<sup>rd</sup> Diphtheria immunisation.
3. Children are routinely scheduled for "primary" immunisations against each of the following: Diphtheria, Tetanus, Pertussis (Whooping Cough), Polio, Haemophilus Influenza B (Hib) and Meningitis C. These are given in a series of immunisations from the age of 2 months. Additional immunisations against pneumococcal infection have also been recently introduced. A single dose of MMR (Measles, Mumps and Rubella) is offered from 13 months. The national programme aims to immunise 95% of children by the age of 2.

Source: KC51 Returns Database for NHS Wirral, 2013

**Figure 14: Immunisation Uptake of Measles, Mumps, Rubella (MMR) aged 2 Years Old: Birkenhead Constituency, 2011/12**



As the chart and table show, Birkenhead constituency has the lowest rate of uptake of the MMR (at age 2) of all four constituencies at 91.5%. All three of the other constituencies are achieving upward of 94% (although this is still not quite the level of 95% required to prevent epidemics). Wards of particular concern in the constituency are Birkenhead & Tranmere (88%), Rock Ferry (90%) and Bidston & St. James (91%).

**Table 14: Immunisation Uptake of Measles, Mumps, Rubella (MMR) aged 2 Years Old: Birkenhead Constituency, 2011/12**

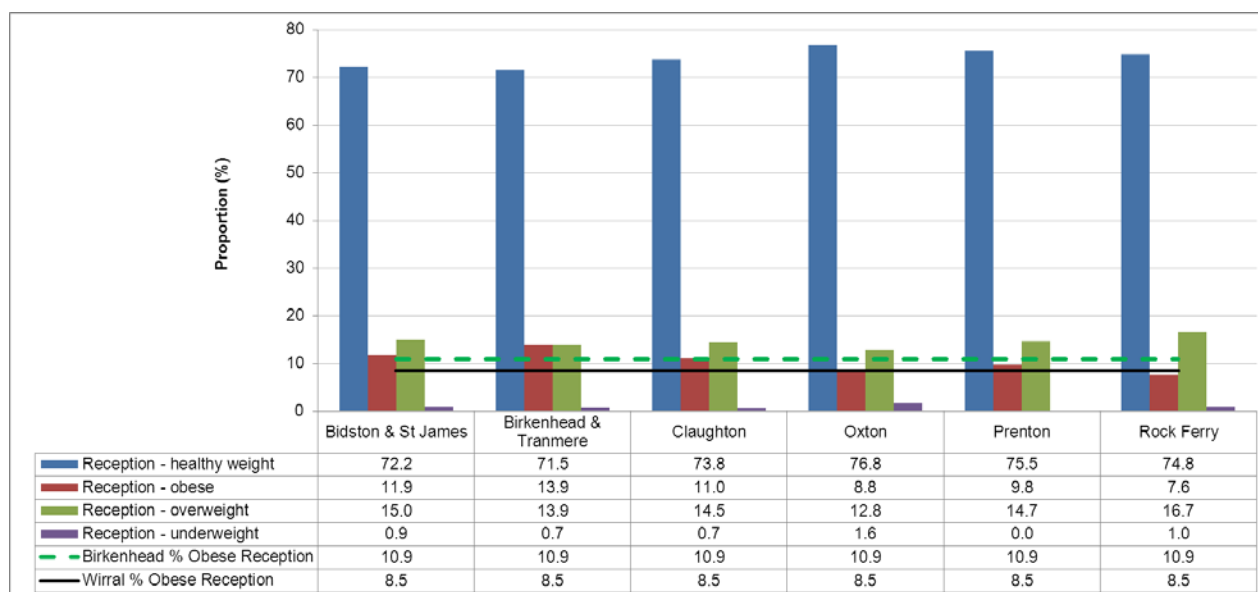
Ward of Residence (2004 boundaries)	Uptake of 1st MMR Immunisation		
	Number of Children Aged 2	Number Vaccinated	Uptake Rate (%)
Bidston and St James	234	212	90.6
Birkenhead and Tranmere	303	266	87.8
Claughton	152	145	95.4
Oxton	130	122	93.8
Prenton	155	150	96.8
Rock Ferry	241	217	90.0
<b>Birkenhead Constituency</b>	<b>1215</b>	<b>1112</b>	<b>91.5</b>
<b>Wallasey Constituency</b>	<b>1115</b>	<b>1051</b>	<b>94.3</b>
<b>Wirral South Constituency</b>	<b>739</b>	<b>701</b>	<b>94.9</b>
<b>West Wirral Constituency</b>	<b>657</b>	<b>618</b>	<b>94.1</b>
<b>Wirral</b>	<b>3,762</b>	<b>3,513</b>	<b>93.4</b>

#### Notes and Definitions

1. A single dose of MMR (Measles, Mumps and Rubella) is offered from 13 months. The national programme aims to immunise 95% of children by the age of 2.

Source: KC51 Returns Database for NHS Wirral, 2013

**Figure 15: Obesity in children at Reception (age 4/5) years, Birkenhead Constituency, 2012/13**



As the chart and table show, obesity in Reception children (aged 4/5) was higher in Birkenhead constituency compared to Wirral overall. Only Rock Ferry ward had rates of obesity which were below the Wirral average (7.6% compared to the Wirral average of 8.5%). In Birkenhead & Tranmere ward, one in seven (14%) Reception aged children were obese in 2012/13, far above the Wirral average. The figure in Bidston & St. James was one in eight. In Wirral overall, the figure was one in 11 and in Wirral South and Wallasey, just 1 in 14 children were obese at this age.

**Table 15: Obesity in children at Reception (age 4/5), Birkenhead Constituency, 2012/13**

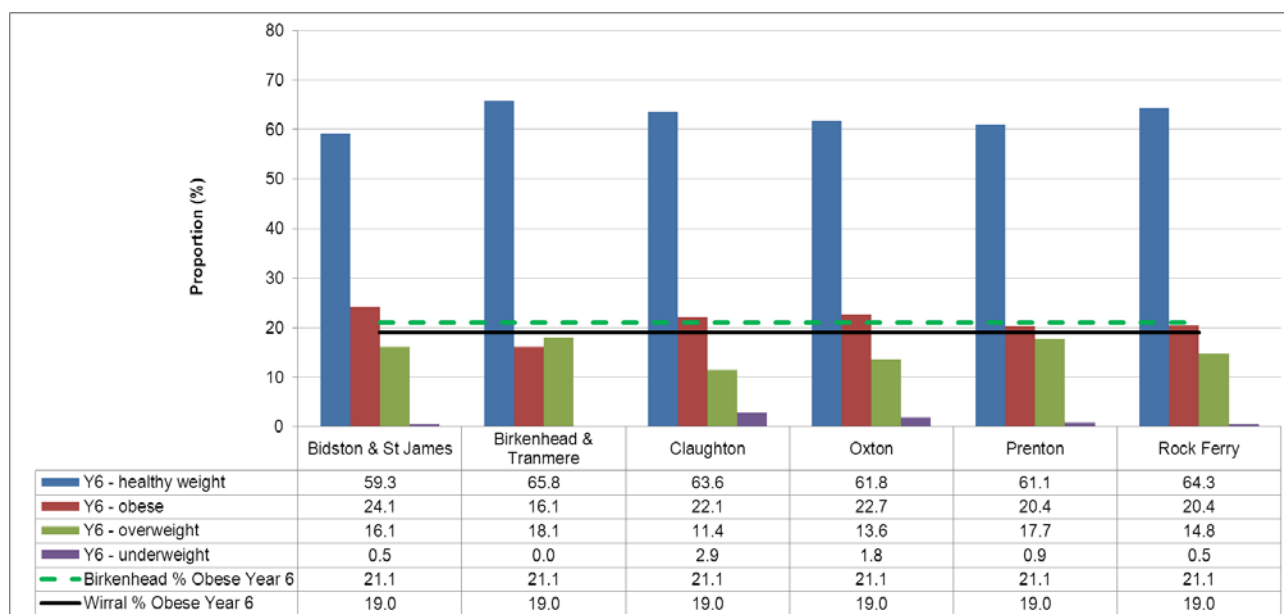
Ward	Healthy weight	Obese	Overweight	Underweight
Bidston & St James	72%	12%	15%	1%
Birkenhead & Tranmere	72%	14%	14%	1%
Claughton	74%	11%	14%	1%
Oxtan	77%	9%	13%	2%
Prenton	75%	10%	15%	0%
Rock Ferry	75%	8%	17%	1%
West Wirral Constituency	80%	9%	11%	0%
Birkenhead Constituency	74%	11%	15%	1%
Wallasey Constituency	79%	7%	14%	1%
Wirral South Constituency	77%	7%	15%	0%
<b>Wirral</b>	<b>77%</b>	<b>8%</b>	<b>14%</b>	<b>1%</b>

#### Notes and Definitions

1. The National Child Measurement Programme (NCMP) measures the weight and height of children in reception class (aged 4 to 5 years) and year 6 (aged 10 to 11 years) to assess overweight children and obese levels within primary schools
2. Children's heights and weights are measured and used to calculate a Body Mass Index (BMI) centile
3. Defining children as overweight or obese is a complex process, given that their height and weight change at the same time. An individual's BMI is calculated by dividing their weight (expressed in kilograms) by the square of their height (expressed in metres).
4. The method of assigning a BMI classification is different for children and adults

Source: National Child Measurement Programme, 2013

**Figure 16:** Obesity in children at Year 6 (age 10/11) years, Birkenhead Constituency, 2012/13



As the chart and table show, obesity in children of Year 6 age (10/11) was higher in most Birkenhead constituency wards (compared to the Wirral average was higher in Birkenhead constituency compared to Wirral overall (21% compared to 19%). Bidston & St. James, Claughton and Oxton wards all had obesity rates of above 20% (or one in 5 of all children) and in Bidston & St. James it was almost one in four (24%). Interestingly, Birkenhead & Tranmere ward was below both the constituency and Wirral average rates, with 16% of children obese. The Wirral average was 19% of children obese in this age range. Also interesting was Prenton ward, where 20% of children were overweight. Combined with the 20% who were obese, this means that 40% are either overweight or obese – much higher than the Wirral average.

**Table 16:** Obesity in children at Year 6 (age 10/11) years, Birkenhead Constituency, 2012/13

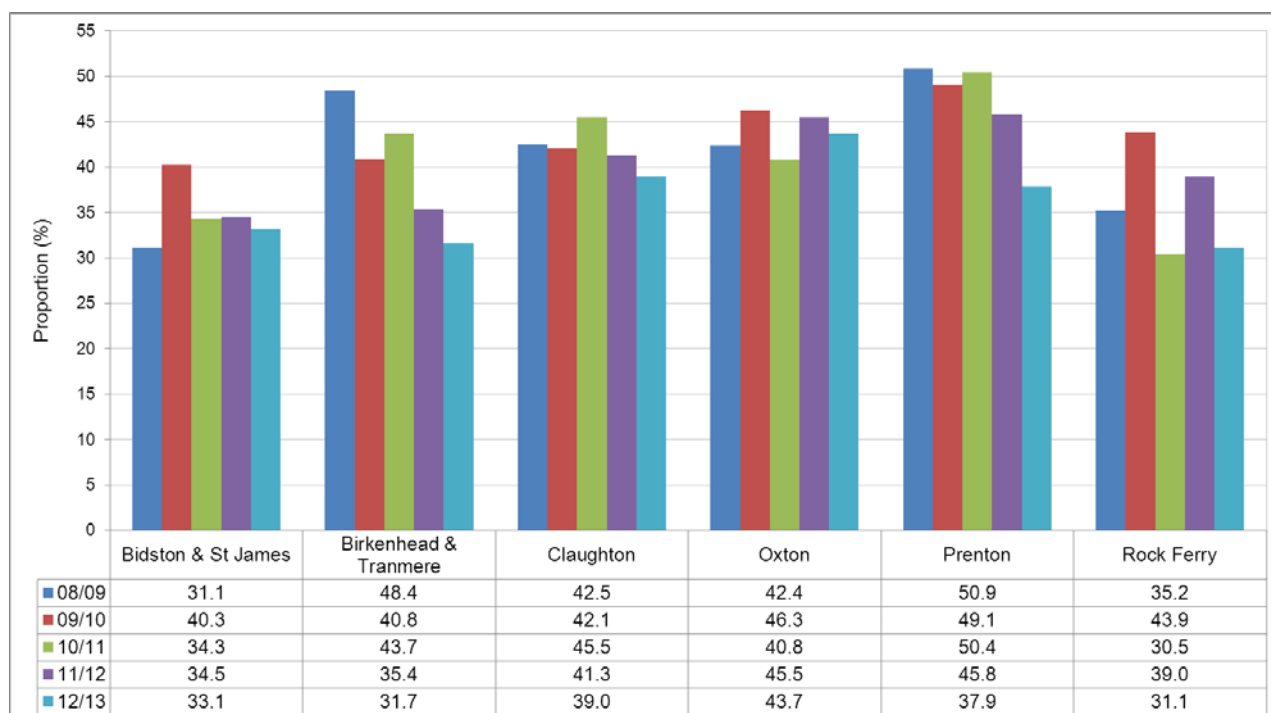
Ward	Healthy weight	Obese	Overweight	Underweight
Bidston & St James	59%	24%	14%	0%
Birkenhead & Tranmere	66%	16%	18%	0%
Claughton	64%	22%	11%	1%
Oxton	62%	23%	12%	1%
Prenton	61%	20%	20%	0%
Rock Ferry	64%	20%	14%	0%
Birkenhead Constituency	63%	21%	15%	1%
Wallasey Constituency	65%	21%	13%	1%
Wirral South Constituency	64%	19%	15%	2%
West Wirral Constituency	72%	14%	12%	1%
<b>Wirral</b>	<b>65%</b>	<b>19%</b>	<b>14%</b>	<b>1%</b>

#### Notes and Definitions

1. The National Child Measurement Programme (NCMP) measures the weight and height of children in reception class (aged 4 to 5 years) and year 6 (aged 10 to 11 years) to assess overweight children and obese levels within primary schools
2. Children's heights and weights are measured and used to calculate a Body Mass Index (BMI) centile
3. Defining children as overweight or obese is a complex process, given that their height and weight change at the same time. An individual's BMI is calculated by dividing their weight (expressed in kilograms) by the square of their height (expressed in metres).
4. The method of assigning a BMI classification is different for children and adults

Source: National Child Measurement Programme, 2013

**Figure 17: Smoking Quit Rates (percentages): Birkenhead Constituency, 2008/09 to 2012/13**



As the chart and table show, the rate of smokers quitting in 2012/13 was highest in Oxton ward and lowest in Rock Ferry. Of particular concern, is the continued drop in quitters from Birkenhead & Tranmere, where quit rates have fallen from 48% in 2008/09, to 32% in 2012/13. In a ward likely to have a higher proportion of smokers than many other Wirral wards to start off with, this should be noted. Quit rates are over 10% higher in all three of the other constituencies compared to Birkenhead (upward of 46%, compared to 36% in Birkenhead).

**Table 17: Smoking Quit Rates (percentages): Birkenhead Constituency, 2008/09 to 2012/13**

Ward of Residence (2004 boundaries)	Quit Rate %				
	2008/09	2009/10	2010/11	2011/12	2012/13
Bidston and St James	31.1	40.3	34.3	34.5	33.1
Birkenhead and Tranmere	48.4	40.8	43.7	35.4	31.7
Claughton	42.5	42.1	45.5	41.3	39.0
Oxton	42.4	46.3	40.8	45.5	43.7
Prenton	50.9	49.1	50.4	45.8	37.9
Rock Ferry	35.2	43.9	30.5	39.0	31.1
<b>Birkenhead Constituency</b>	<b>41.8</b>	<b>43.7</b>	<b>40.9</b>	<b>40.3</b>	<b>36.1</b>
<b>Wallasey Constituency</b>	<b>45.4</b>	<b>49.2</b>	<b>46.8</b>	<b>45.8</b>	<b>46.2</b>
<b>Wirral South Constituency</b>	<b>46.0</b>	<b>49.7</b>	<b>38.5</b>	<b>45.5</b>	<b>46.9</b>
<b>Wirral West Constituency</b>	<b>45.4</b>	<b>52.8</b>	<b>46.9</b>	<b>38.4</b>	<b>46.5</b>
<b>Wirral</b>	<b>43.7</b>	<b>46.6</b>	<b>43.7</b>	<b>41.4</b>	<b>41.0</b>

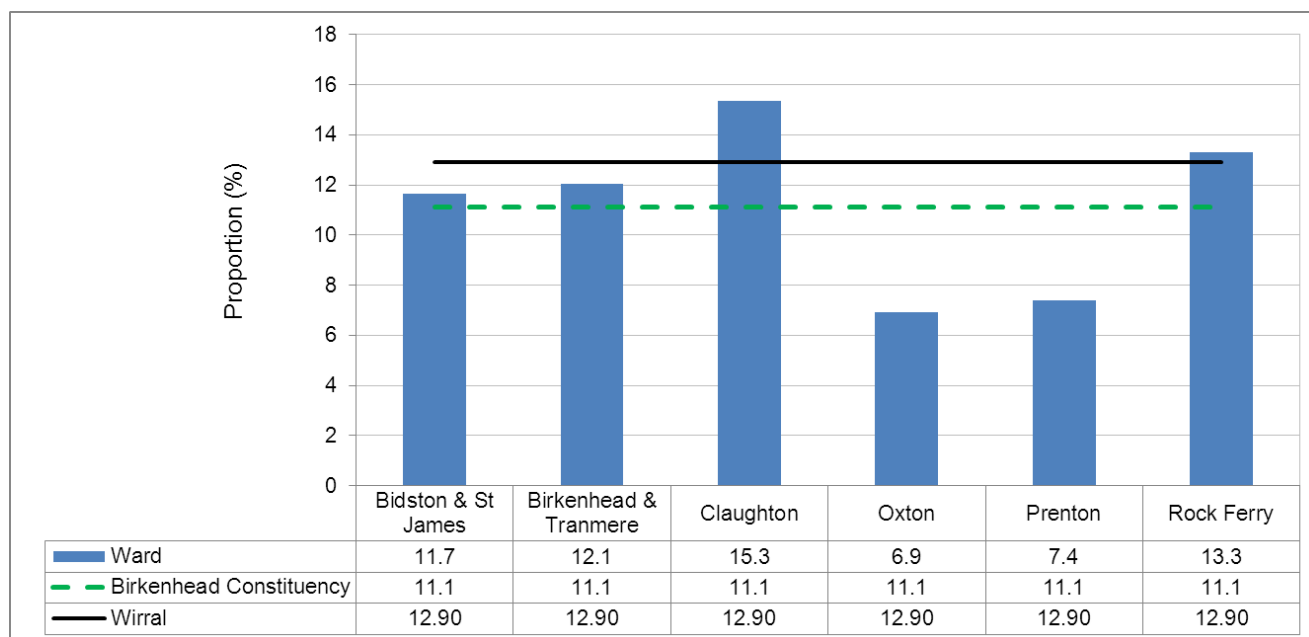
#### Notes and Definitions

1. Successful quitters are clients who did not smoke in the 4 weeks following their quit date (self-reported smoking status).
2. The Unknown/Other category is clients who did not give a full/accurate postcode or the postcode could not be matched to a Wirral ward.

Source: Wirral Community NHS Trust Stop Smoking Service, 2013



**Table 18: Road Collision Casualties: Proportion killed or seriously injured: Birkenhead Constituency, 2010-12 (3 years pooled)**



As the chart and table show, Birkenhead had the highest *number* of total casualties arising from road traffic collisions of all four Wirral constituencies (double the other constituencies in fact), but the lowest proportion of people Killed or Seriously Injured (KSI) as a result (11% compared to 13% in Wirral overall). Also, although the total number of casualties arising from all road traffic collisions was highest in Birkenhead & Tranmere wards, the proportion of those KSI was actually highest in Claughton ward.

**Table 18: Road Collision Casualties: Proportion killed or seriously injured: Birkenhead Constituency, 2010-12 (3 years pooled)**

Ward (2004 boundaries)	Total Number of Casualties	% Killed or Seriously Injured
Bidston & St James	206	11.7
Birkenhead & Tranmere	257	12.1
Claughton	163	15.3
Oxton	101	6.9
Prenton	122	7.4
Rock Ferry	158	13.3
<b>Birkenhead Constituency</b>	<b>1,007</b>	<b>11.1</b>
<b>Wallasey Constituency</b>	<b>597</b>	<b>13.5</b>
<b>Wirral South Constituency</b>	<b>549</b>	<b>15.1</b>
<b>Wirral West Constituency</b>	<b>439</b>	<b>13.8</b>
<b>Wirral</b>	<b>2,592</b>	<b>12.9</b>

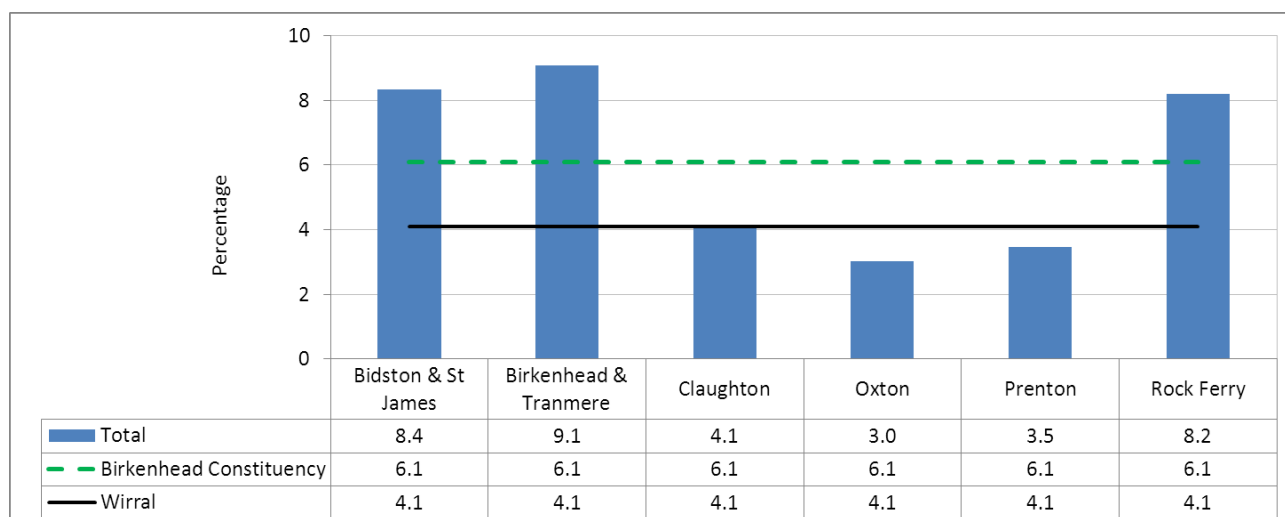
#### Notes and Definitions

1. The data in this table are based on the information collected by Merseyside Police at the scene of the collision using the STATS-19 form. This is used to record the details of the incident and the circumstances surrounding it.
2. The data collated to wards, is based on the location of the collision rather than the usual place of residence of the collision victim.
3. The data is up to and inclusive of 31/12/2012.

Source: Wirral Council Accident Investigation Unit, 2013



**Figure 19: Job Seekers Allowance (JSA) claimant rate: Birkenhead Constituency, March 2013**



As Figure 3 shows, the ward with the highest percentage of JSA claimants in the Birkenhead constituency area was Birkenhead & Tranmere. In actual numbers (as of March 2013), this equated to 693 people. The ward with the lowest rate of JSA claimants was Oxton, with a rate of 3% or 208 claimants. Only Oxton and Prenton had rates below the Wirral average.

**Table 19: Job Seekers Allowance claimants: Numbers and rates by gender: Birkenhead Constituency, March 2013**

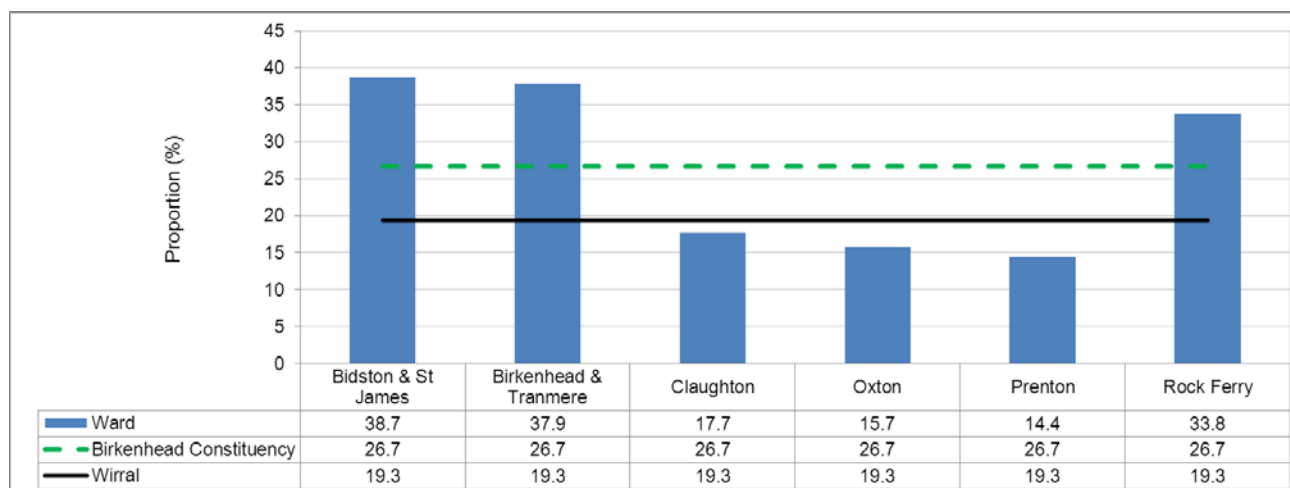
Ward of Residence (2004 boundaries)	Total Job Seekers Allowance claimants					
	Male		Female		Total	
	Number	%	Number	%	Number	%
Bidston and St James	548	12.5	258	4.9	806	8.4
Birkenhead and Tranmere	693	13.4	268	5.0	961	9.1
Claughton	276	6.0	102	2.2	378	4.1
Oxton	208	4.5	70	1.5	278	3.0
Prenton	218	4.8	102	2.2	320	3.5
Rock Ferry	516	11.8	237	5.0	753	8.2
<b>Birkenhead Constituency</b>	<b>2459</b>	<b>8.9</b>	<b>1037</b>	<b>3.5</b>	<b>3496</b>	<b>6.1</b>
<b>Wallasey Constituency</b>	<b>1827</b>	<b>6.6</b>	<b>805</b>	<b>2.7</b>	<b>2632</b>	<b>4.6</b>
<b>West Wirral</b>	<b>680</b>	<b>3.4</b>	<b>327</b>	<b>1.5</b>	<b>1007</b>	<b>2.4</b>
<b>Wirral South Constituency</b>	<b>645</b>	<b>3.0</b>	<b>319</b>	<b>1.4</b>	<b>964</b>	<b>2.2</b>
<b>Wirral</b>	<b>5,611</b>	<b>5.8</b>	<b>2,488</b>	<b>2.4</b>	<b>8,099</b>	<b>4.1</b>
<b>North-West</b>	<b>129,873</b>	<b>5.7</b>	<b>62,989</b>	<b>2.8</b>	<b>192,862</b>	<b>4.2</b>
<b>UK</b>	<b>1,012,106</b>	<b>5.0</b>	<b>526,470</b>	<b>2.6</b>	<b>1,538,576</b>	<b>3.8</b>

#### Notes and Definitions

1. Job seekers allowance figures are based on the number of people resident in the area who are unemployed and claiming Job Seekers Allowance (JSA). The JSA percentage (%) rate is expressed as a proportion of resident working age population (16-59 for females and 16-64 for males).
2. ONS Mid-2011 population estimates have been used as a denominator to calculate the JSA rates.
3. Figures may not add up to the total figures due to rounding.

Source: NOMISWEB, 2013

**Figure 20:** Proportion of Council Tax Claimants: Birkenhead Constituency, 2013



As the chart and table show, the proportion of the working age population claiming Council Tax Benefit was higher in Birkenhead constituency compared to Wirral overall (27% compared to 19%) in 2013. Within the constituency there was considerable variation between the wards, with the rate of claimants ranging from 14% in Prenton, to 39% in Bidston & St. James.

**Table 20:** Proportion of Council Tax Claimants: Birkenhead Constituency, 2013

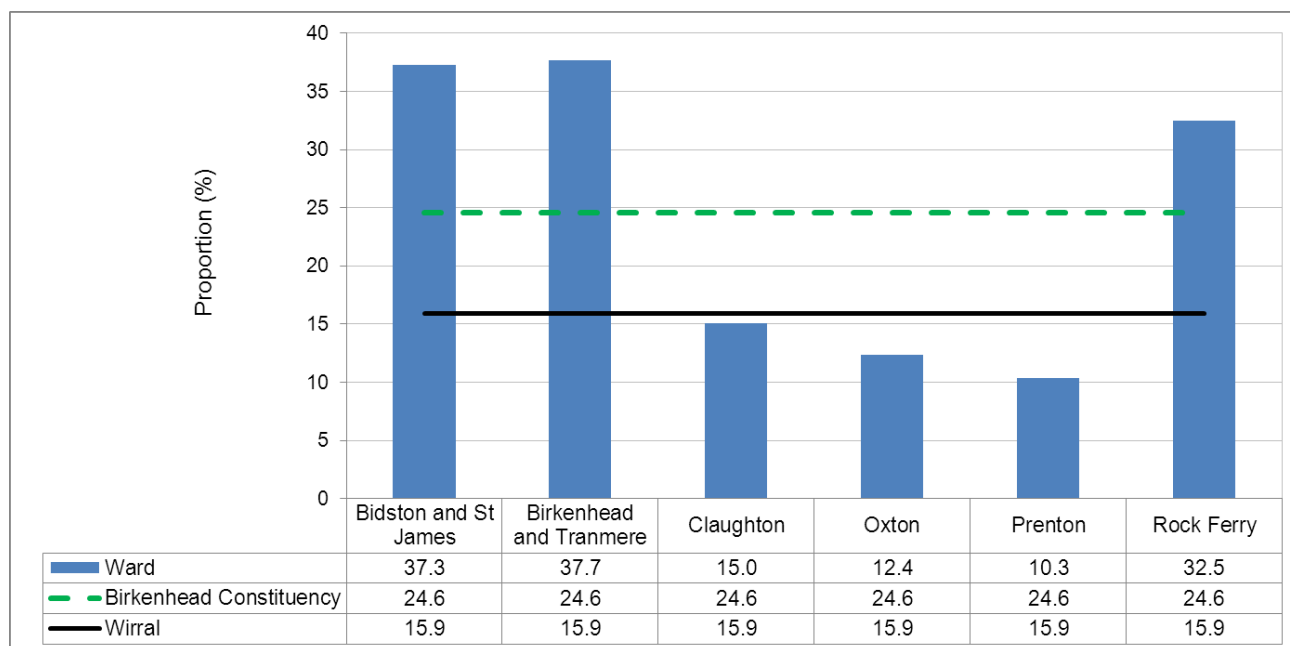
Ward of Residence (2004 boundaries)	Number of Council Tax Benefit Claimants	Proportion %
Bidston and St James	3733	38.7
Birkenhead and Tranmere	4009	37.9
Claughton	1637	17.7
Oxton	1449	15.7
Prenton	1329	14.4
Rock Ferry	3097	33.8
<b>Birkenhead Constituency</b>	<b>15254</b>	<b>26.7</b>
<b>Wallasey Constituency</b>	<b>12215</b>	<b>21.4</b>
<b>Wirral South Constituency</b>	<b>5259</b>	<b>12.1</b>
<b>West Wirral Constituency</b>	<b>5685</b>	<b>13.7</b>
<b>Wirral</b>	<b>38413</b>	<b>19.3</b>

#### Notes and Definitions

1. Data is for all Claimants in Wirral in receipt of Council Tax Benefit for the period up to and including July 2013
2. Proportion is calculated using Wirral ONS mid-2011 single year pops for the working age population (16-64 years)

Source: NOMIS, 2013

**Figure 21:** Proportion of Housing Benefit Claimants: Birkenhead Constituency, 2013



As the chart and table show, the proportion of the working age population claiming Housing Benefit was higher in Birkenhead constituency compared to Wirral overall (25% compared to 16%) in 2013. Within the constituency there was considerable variation between the wards, with the rate of claimants ranging from 10% in Prenton, to 38% in Birkenhead & Tranmere.

**Table 21:** Proportion of Housing Benefit Claimants: Birkenhead Constituency, 2013

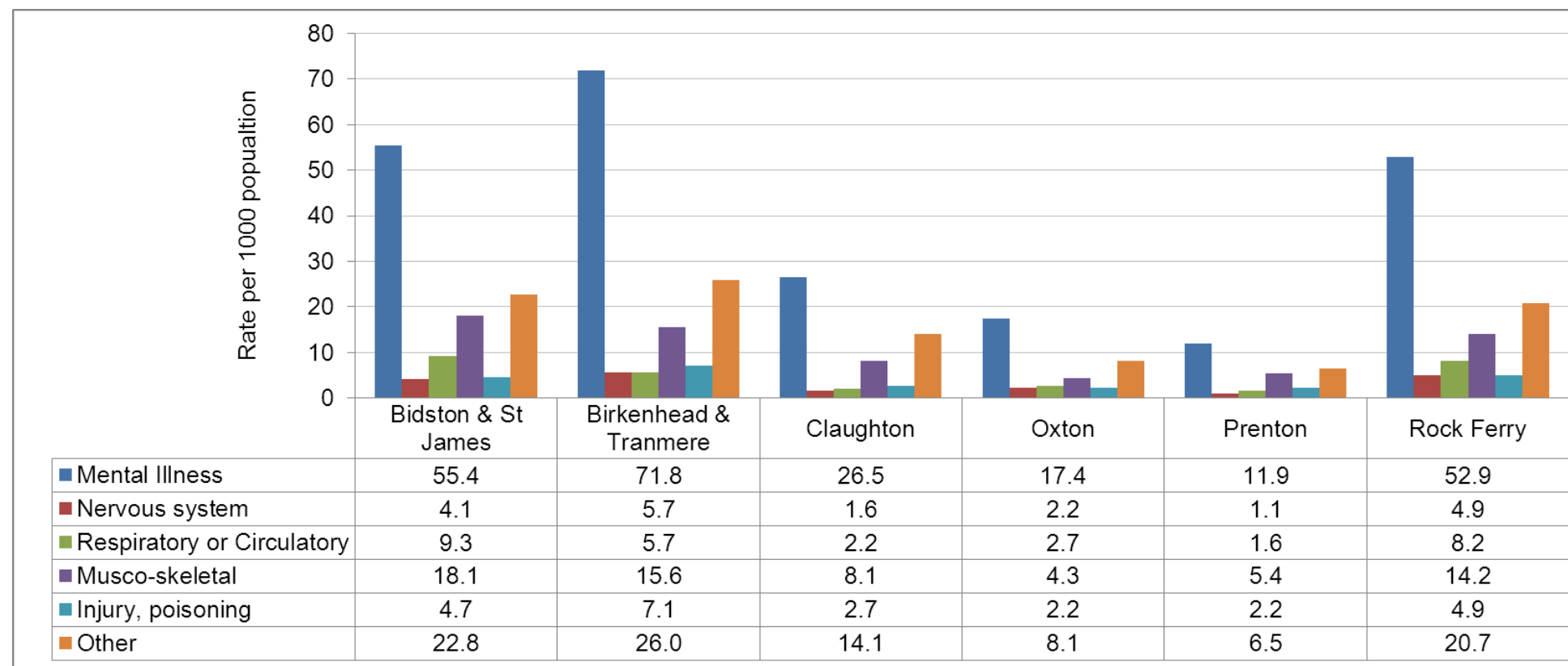
Ward of Residence (2004 boundaries)	Number of Housing Benefit Claimants	Percentage of working age population%
Bidston and St James	3599	37.3
Birkenhead and Tranmere	3988	37.7
Claughton	1390	15.0
Oxton	1142	12.4
Prenton	955	10.3
Rock Ferry	2978	32.5
<b>Birkenhead Constituency</b>	<b>14052</b>	<b>24.6</b>
<b>Wallasey Constituency</b>	<b>9972</b>	<b>24.1</b>
<b>Wirral South Constituency</b>	<b>3793</b>	<b>8.7</b>
<b>West Wirral Constituency</b>	<b>3803</b>	<b>9.2</b>
<b>Wirral</b>	<b>31620</b>	<b>15.9</b>

#### Notes and Definitions

1. Data is for all Claimants in Wirral in receipt of Housing Benefit for the period up to and including July 2013
2. Proportion is calculated using Wirral ONS mid-2011 single year pops for the working age population (16-64 years)

Source: NOMIS, 2013

**Figure 22:** Employment & Support Allowance Claimants by specific health conditions, Number and Rates: Birkenhead Constituency, November 2012



As the chart shows, the most common reason for claiming ESA (as of November 2012) in all of the Birkenhead constituency ward was mental illness (the next most common reasons were 'other' and then musculoskeletal problems). This is particularly marked in Birkenhead & Tranmere ward, where the rate of those claiming ESA for mental health reasons is almost seven times higher than in Prenton ward for example.

#### Notes and Definitions

1. On 31<sup>st</sup> January 2011 Incapacity Benefit was changed to Employment & Support Allowance (benefit paid to working aged people unable to work due to illness and/or disability).
2. Percentage of working age population calculated using 2011 population estimates by LSOA for people aged 16-64.

Source: NOMIS Benefit Claimants for Small Areas

**Table 22:** Employment & Support Allowance Claimants by specific health conditions, Number and Rates: Birkenhead Constituency, November 2012

Ward of Residence (2004 boundaries)	Disease Specific Claimants (rate per 1,000)							Total Claimants (number)
	Mental Illness	Nervous system	Respiratory or Circulatory	Musco- skeletal	Injury, poisoning	Other	Total	
Bidston & St James	55.4	4.1	9.3	18.1	4.7	22.8	114.5	1105
Birkenhead & Tranmere	71.8	5.7	5.7	15.6	7.1	26.0	131.8	1395
Claughton	26.5	1.6	2.2	8.1	2.7	14.1	55.2	510
Oxton	17.4	2.2	2.7	4.3	2.2	8.1	36.9	340
Prenton	11.9	1.1	1.6	5.4	2.2	6.5	28.7	265
Rock Ferry	52.9	4.9	8.2	14.2	4.9	20.7	105.8	970
<b>Birkenhead Constituency</b>	<b>39.3</b>	<b>3.3</b>	<b>4.9</b>	<b>11.0</b>	<b>3.9</b>	<b>16.4</b>	<b>78.8</b>	<b>4585</b>
<b>Wallasey Constituency</b>	<b>30.4</b>	<b>3.1</b>	<b>4.1</b>	<b>8.2</b>	<b>2.9</b>	<b>13.7</b>	<b>62.4</b>	<b>3595</b>
<b>West Wirral Constituency</b>	<b>16.3</b>	<b>3.1</b>	<b>3.0</b>	<b>4.6</b>	<b>2.0</b>	<b>8.7</b>	<b>37.7</b>	<b>1475</b>
<b>Wirral South Constituency</b>	<b>15.0</b>	<b>2.7</b>	<b>2.3</b>	<b>4.6</b>	<b>1.6</b>	<b>8.2</b>	<b>34.3</b>	<b>1540</b>
<b>Wirral</b>	<b>27.3</b>	<b>3.1</b>	<b>3.7</b>	<b>7.6</b>	<b>2.8</b>	<b>12.6</b>	<b>57.1</b>	<b>11365</b>

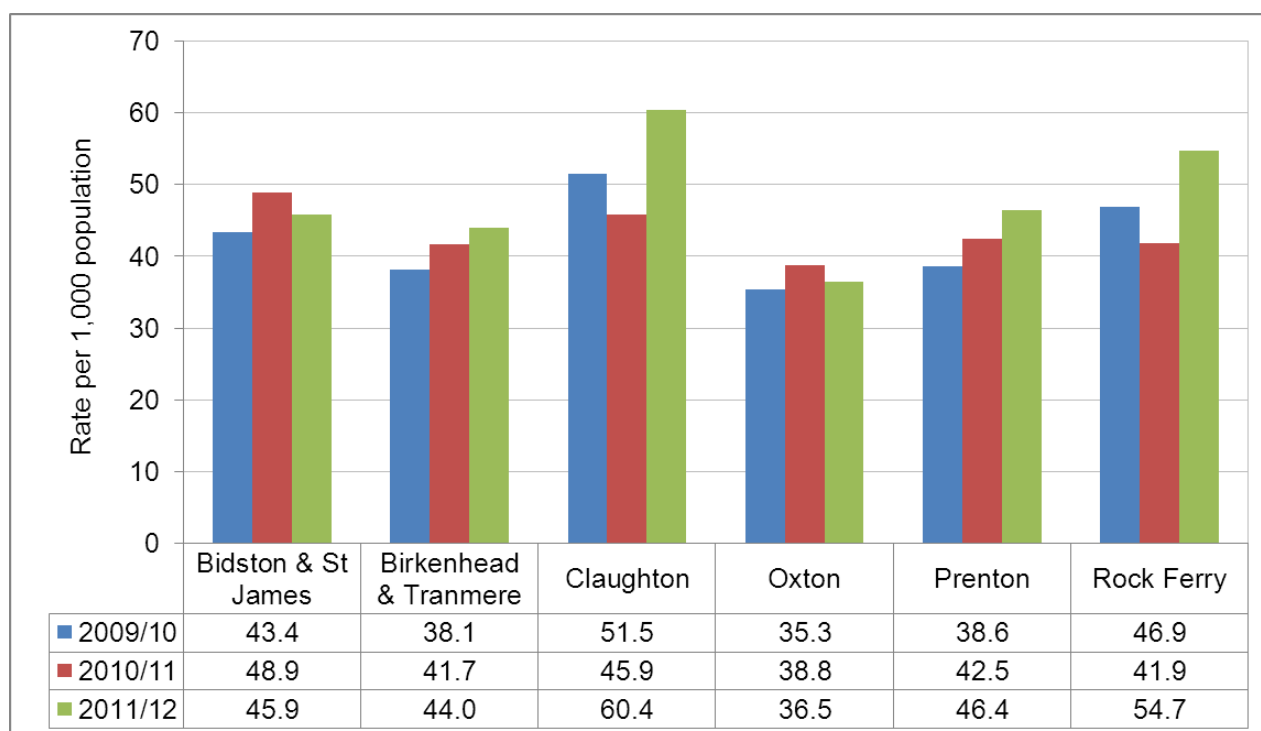
The table above shows the same information as is shown in the previous chart, but with the addition of the comparators for the other constituency areas. As the table shows, Birkenhead has the highest ESA claimant rate of the four Wirral constituencies. In actual numbers, (as of November 2012), there were 1,395 people in Birkenhead & Tranmere claiming ESA. The ESA claimant rate in the wards of Bidston & St. James and Birkenhead & Tranmere is more than double the rate for Wirral overall.

#### Notes and Definitions

1. On 31<sup>st</sup> January 2011 Incapacity Benefit was changed to Employment & Support Allowance (benefit paid to working aged people unable to work due to illness and/or disability).
2. Percentage of working age population calculated using 2011 population estimates by LSOA for people aged 16-64.

Source: NOMIS Benefit Claimants for Small Areas

**Figure 23:** Hospital admission rates for falls in people aged 65 years and over: Birkenhead Constituency, 2009/10 to 2011/12



As the chart and table show, the wards with the highest rates of falls in 2012/13 in Birkenhead constituency were Claughton and Rock Ferry, Oxton had the lowest rates (data on ward of residence of older person, not location of the fall). Birkenhead had the highest rate of falls in the over 65s of all four constituencies.

**Table 23:** Hospital Admissions (Number and rate per 1,000) for falls in people aged 65 years and over: Birkenhead Constituency, 2009/10 to 2011/12

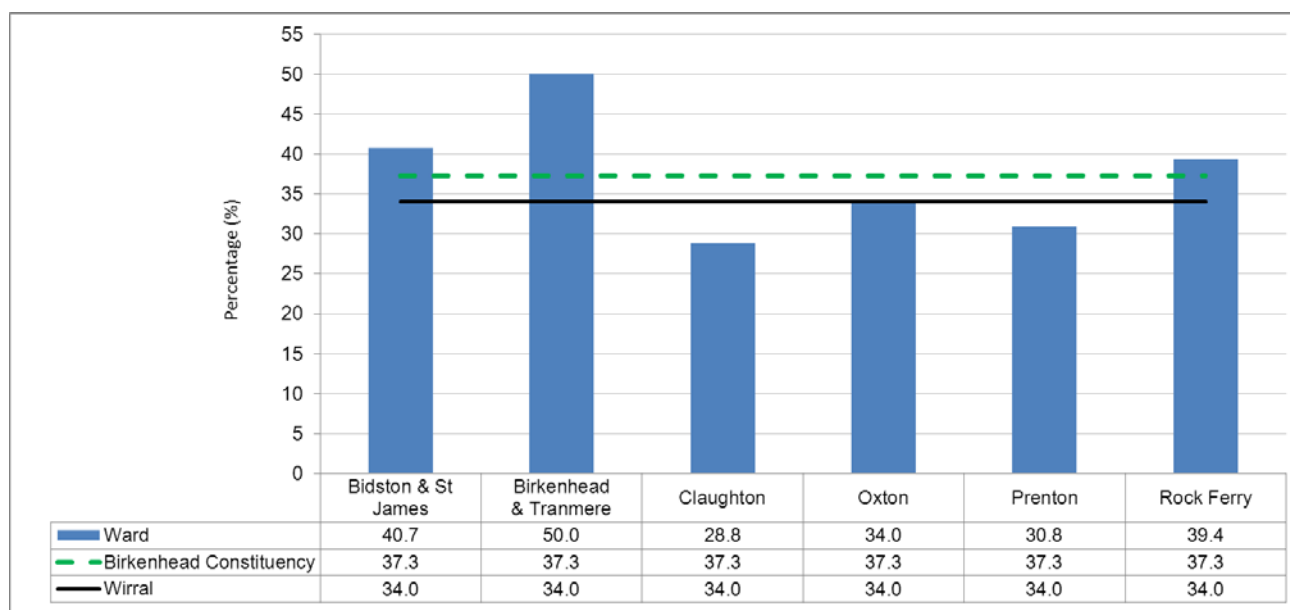
Ward of Residence (2004 boundaries)	2009/10		2010/11		2011/12	
	Number	Rate	Number	Rate	Number	Rate
Bidston & St James	87	43.4	98	48.9	92	45.9
Birkenhead & Tranmere	64	38.1	70	41.7	74	44.0
Claughton	138	51.5	123	45.9	162	60.4
Oxton	91	35.3	100	38.8	94	36.5
Prenton	99	38.6	109	42.5	119	46.4
Rock Ferry	102	46.9	91	41.9	119	54.7
<b>Birkenhead Constituency</b>	<b>581</b>	<b>42.5</b>	<b>591</b>	<b>43.2</b>	<b>660</b>	<b>48.2</b>
<b>Wallasey Constituency</b>	<b>592</b>	<b>40.3</b>	<b>591</b>	<b>40.2</b>	<b>584</b>	<b>39.8</b>
<b>Wirral South Constituency</b>	<b>566</b>	<b>36.6</b>	<b>550</b>	<b>35.6</b>	<b>668</b>	<b>43.2</b>
<b>Wirral West Constituency</b>	<b>612</b>	<b>39.7</b>	<b>458</b>	<b>29.7</b>	<b>499</b>	<b>32.4</b>
<b>Wirral</b>	<b>2351</b>	<b>40.2</b>	<b>2328</b>	<b>39.3</b>	<b>2584</b>	<b>43.6</b>

#### Notes and Definitions

1. The majority of the data is for emergency hospital admissions, but may contain other admissions in over 65s
2. Data includes admissions where any of the 8 diagnoses codes included an ICD-10 code corresponding to a fall
3. The rate is per 1,000 persons aged 65 and over using the population estimates mid-2010.

Source: Secondary User Service (Arrowe Park Hospital data), 2013

Figure 24: Percentage of people aged 65 and above living alone, Birkenhead constituency, 2011



As the chart and table show, one in three older people in Wirral aged 65 or over live alone. Although Birkenhead has the lowest actual number of people aged over 65 of all the constituencies, the data shows that they are more likely to be living alone than older people in other areas of Wirral. The percentage living alone is 37.3% in Birkenhead constituency compared to 34.0% in Wirral overall. There are considerable differences between the wards however, with half of all older people in Birkenhead and Tranmere living alone (50%, the highest in Wirral).

Table 24: Percentage of people aged 65 and above living alone, Birkenhead constituency, 2011

Ward	Total population aged 65+	Number aged 65+ living alone	% of 65+ living alone
Bidston & St James	2048	834	40.7
Birkenhead & Tranmere	1702	851	50.0
Claughton	2826	813	28.8
Oxton	2742	932	34.0
Prenton	2691	830	30.8
Rock Ferry	2019	795	39.4
<b>Birkenhead Constituency</b>	<b>14028</b>	<b>5055</b>	<b>37.3</b>
<b>Wallasey Constituency</b>	<b>15260</b>	<b>5572</b>	<b>36.8</b>
<b>Wirral South Constituency</b>	<b>16162</b>	<b>4780</b>	<b>30.0</b>
<b>Wirral West Constituency</b>	<b>15977</b>	<b>5214</b>	<b>32.7</b>
<b>Wirral</b>	<b>61427</b>	<b>20621</b>	<b>34</b>

Source: Census, 2011

**Table 25:** Wirral Carers known to services: Birkenhead Constituency, 2013

<b>Ward of Residence (2004 boundaries)</b>	<b>Number of Informal/Principal Carers</b>
Bidston and St James	307
Birkenhead and Tranmere	237
Claughton	257
Oxton	209
Prenton	268
Rock Ferry	274
<b>Birkenhead Constituency</b>	<b>1552</b>
<b>Wallasey Constituency</b>	<b>1688</b>
<b>Wirral South Constituency</b>	<b>1259</b>
<b>West Wirral Constituency</b>	<b>1234</b>
<b>Wirral</b>	<b>5733</b>

**Notes and Definitions**

1. The term carer is those identified and recorded on the database with a current role of "Informal/Principal Carer". This will not be all carers, only those known to Social Services
2. The numbers are correct at the time of extraction (August 2013)

*Source: Wirral Council Social Services (Swift) database, 2013*

As the table above shows, Bidston & St. James ward has the largest number of carers known to Social Services in 2013. Birkenhead constituency had 1,552 carers overall (second to Wallasey for overall number of carers). It is important to note that this is not all carers, just those who are known to services.

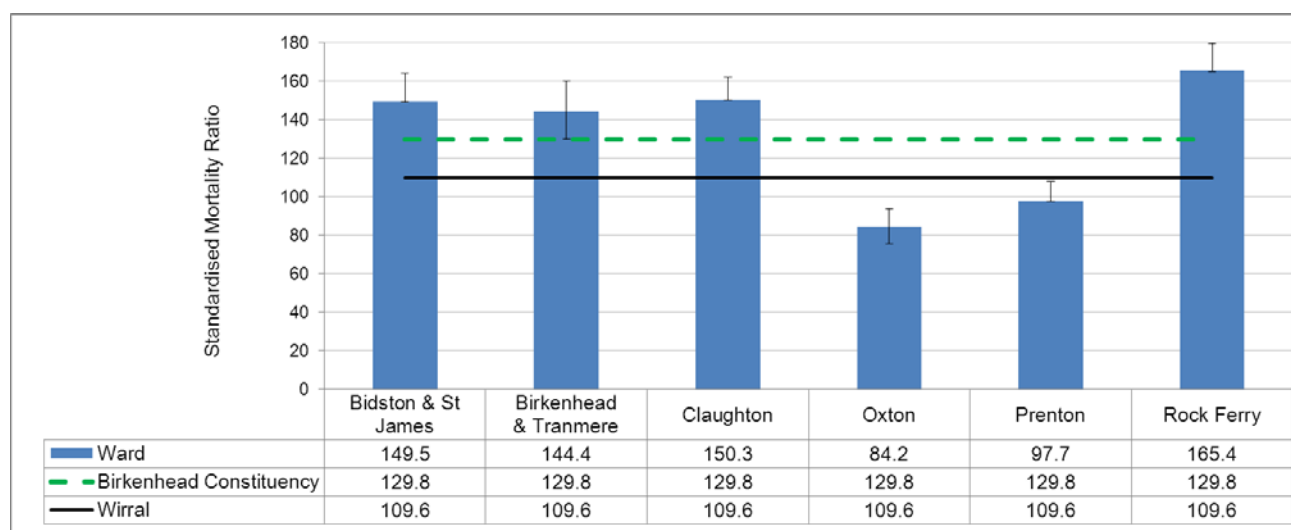
According to the Census (2011), 40,340 people in Wirral identified themselves as a carer, so it is clear that the large majority of those caring are not known to services.

As of August 2012, 4,800 Wirral people were claiming Carer's Allowance (NOMIS, 2013).

These figures mean that around one in eight of all carers in Wirral are known to services and/or claiming Carers Allowance.



**Figure 26:** Standardised Mortality Ratios for All Causes: Birkenhead Constituency, 2009-11 (3 years pooled)



As the chart and table show, Birkenhead constituency has a higher mortality rate (from all causes) than the other three constituencies. In fact, Birkenhead constituency contains the three wards with the highest death rates in Wirral (Rock Ferry, Bidston & St. James and Claughton). The SMR for England is always 100, which means that mortality in Wirral is 10% higher than England (SMR of 110), Birkenhead constituency is 30% higher than England (SMR of 130) and Rock Ferry (highest death rates in Wirral) is 65% worse than England (SMR of 165).

**Table 26:** Standardised Mortality Ratios for All Causes: Birkenhead Constituency, 2009-11 (3 years pooled)

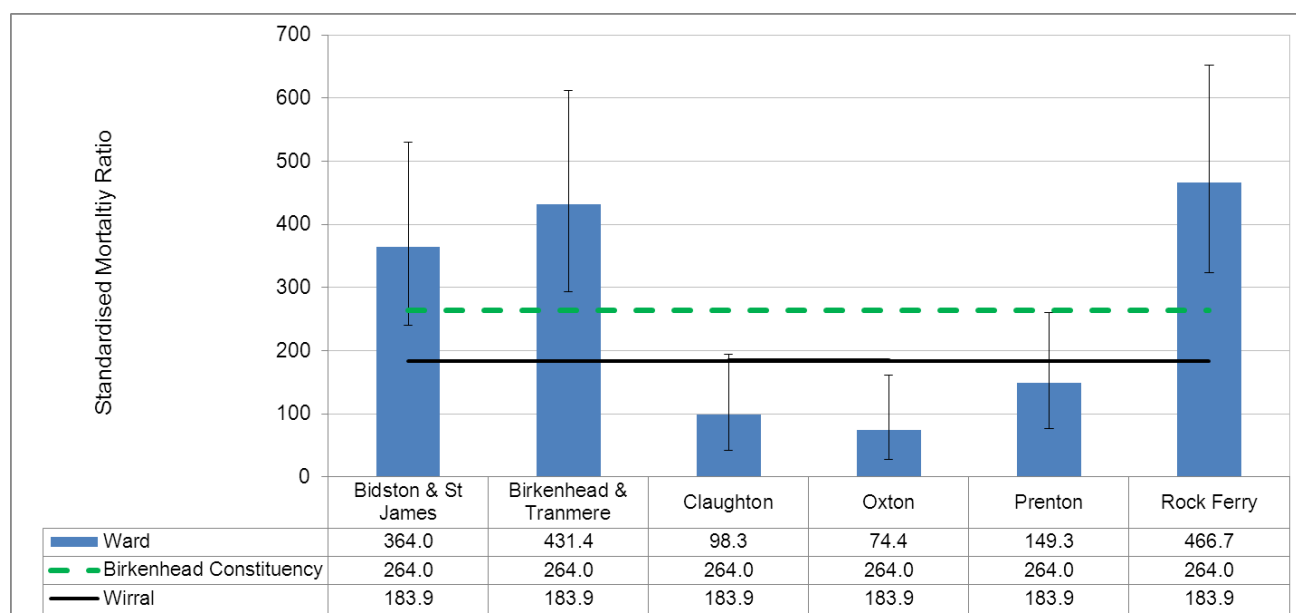
Ward of Residence (2004 boundaries)	SMR	95% Confidence Intervals	
		LCL	UCL
Bidston and St James	149.5	149.2	164.0
Birkenhead and Tranmere	144.4	130.1	160.0
Claughton	150.3	150.1	162.0
Oxton	84.2	75.4	93.8
Prenton	97.7	97.5	107.7
Rock Ferry	165.4	165.1	179.4
<b>Birkenhead Constituency</b>	<b>129.8</b>	<b>125.1</b>	<b>134.7</b>
<b>Wallasey Constituency</b>	<b>114.6</b>	<b>110.3</b>	<b>119.0</b>
<b>Wirral South Constituency</b>	<b>101.4</b>	<b>97.4</b>	<b>105.5</b>
<b>Wirral West Constituency</b>	<b>95.8</b>	<b>92.1</b>	<b>99.7</b>
<b>Wirral</b>	<b>109.6</b>	<b>107.5</b>	<b>111.8</b>

#### Notes and Definitions

1. Standardised Mortality Ratios (SMR) is a way of comparing death rates in a particular area with those in the national population. The SMR for England in 2008-10 is 100, so an area with SMR of 120 is said to have a mortality rate 20% higher than the national average (after taking account of differences in the age structure of the two populations).
2. 95% Confidence Intervals indicate the range within which the true value of SMR falls, e.g. a 95% CI for Wirral of 93.5 to 113.2 means that we can be 95% certain that the SMR lies somewhere between of 93.5 and 113.2.

Source: Office for National Statistics. © Crown Copyright

**Figure 27: Wholly Attributable Alcohol Related Mortality\*: Birkenhead Constituency, 2007-11 (5 years pooled)**



Wholly Attributable Alcohol Related Mortality means deaths from conditions which are only caused by alcohol. As the chart and table show, the three most deprived wards in the Birkenhead constituency have higher rates than Wirral overall (they actually have the highest ward rates in Wirral). Mortality in Rock Ferry was 367% higher than England over this period (2007-11). Birkenhead had double the rate of death seen in West Wirral and South Wirral constituencies.

**Table 27: Wholly Attributable Alcohol Related Mortality: Birkenhead Constituency, 2007-11 (5 years pooled)**

Ward of Residence (2004 boundaries)	SMR	95% Confidence Intervals	
		LCL	UCL
Bidston and St James	364.0	239.9	529.7
Birkenhead and Tranmere	431.4	293.1	612.4
Claughton	98.3	42.5	193.7
Oxton	74.4	27.3	161.9
Prenton	149.3	77.2	260.9
Rock Ferry	466.7	323.2	652.1
<b>Birkenhead Constituency</b>	<b>264.0</b>	<b>167.2</b>	<b>401.8</b>
<b>Wallasey Constituency</b>	<b>197.9</b>	<b>117.0</b>	<b>318.5</b>
<b>Wirral South Constituency</b>	<b>130.9</b>	<b>67.6</b>	<b>232.8</b>
<b>West Wirral Constituency</b>	<b>115.9</b>	<b>57.0</b>	<b>215.0</b>
<b>Wirral</b>	<b>183.9</b>	<b>164.5</b>	<b>205.1</b>

#### Notes and Definitions

- Standardised Mortality Ratios (SMR) is a way of comparing death rates in a particular area with those in the national population. The SMR for England in 2008-10 is 100, so an area with SMR of 120 is said to have a mortality rate 20% higher than the national average (after taking account of differences in the age structure of the two populations).
- 95% Confidence Intervals indicate the range within which the true value of SMR falls, e.g. a 95% CI for Wirral of 93.5 to 113.2 means that we can be 95% certain that the SMR lies somewhere between of 93.5 and 113.2.
- There are 13 conditions whereby definition wholly attributable to alcohol consumption. \*See appendix 1 for list of ICD 10 codes wholly attributable to alcohol

Source: Public Health Mortality Files, 2013

## Appendix 1: ICD 10 Codes used and attributable fractions for alcohol-attributable/specific hospital admission and mortality

ICD 10	Disease	AAF
E24.4	Alcohol-Induced pseudo Cushing's Syndrome	1.00
F10	Mental and behavioural disorders due to use of alcohol	1.00
G31.2	Degeneration of nervous system due to alcohol	1.00
G62.1	Alcoholic polyneuropathy	1.00
G72.1	Alcoholic myopathy	1.00
I42.6	Alcoholic cardiomyopathy	1.00
K29.2	Alcoholic gastritis	1.00
K70	Alcoholic liver disease	1.00
K86.0	Chronic pancreatitis (alcohol induced)	1.00
T51.0	Ethanol	1.00
T51.1	Methanol poisoning	1.00
T51.9	Toxic Effect Alcohol, unspecified	1.00
X45	Accidental poisoning by and exposure to alcohol	1.00

### For further details please contact

- John Highton, JSNA Programme Lead at [johnhighton@wirral.gov.uk](mailto:johnhighton@wirral.gov.uk)
- Sarah Kinsella, Performance & Public Health Intelligence at [sarahkinsella@wirral.gov.uk](mailto:sarahkinsella@wirral.gov.uk)

### To access a range of Wirral JSNA easy read documents

- Please use this link to access easy read content or go to <http://info.wirral.nhs.uk/easyread.html>

### To download the Wirral JSNA logo to your desktop



Go to <http://info.wirral.nhs.uk/default.aspx> or via this [link here](#) and click on 'Download the JSNA desktop icon here'

### To subscribe to Wirral JSNA Bulletin

- Email your contact details to [SubscribeJSNA@wirral.nhs.uk](mailto:SubscribeJSNA@wirral.nhs.uk)

### To give us feedback

- Let us know your views or if you need to find out more about a particular topic or subject then go to <http://info.wirral.nhs.uk/Contact.aspx> or contact us [here](#)